

PLAT AND RECORD

Of a Survey on Section 8 T 2 R 11 E. of the 4 P. M. in Plymouth Township

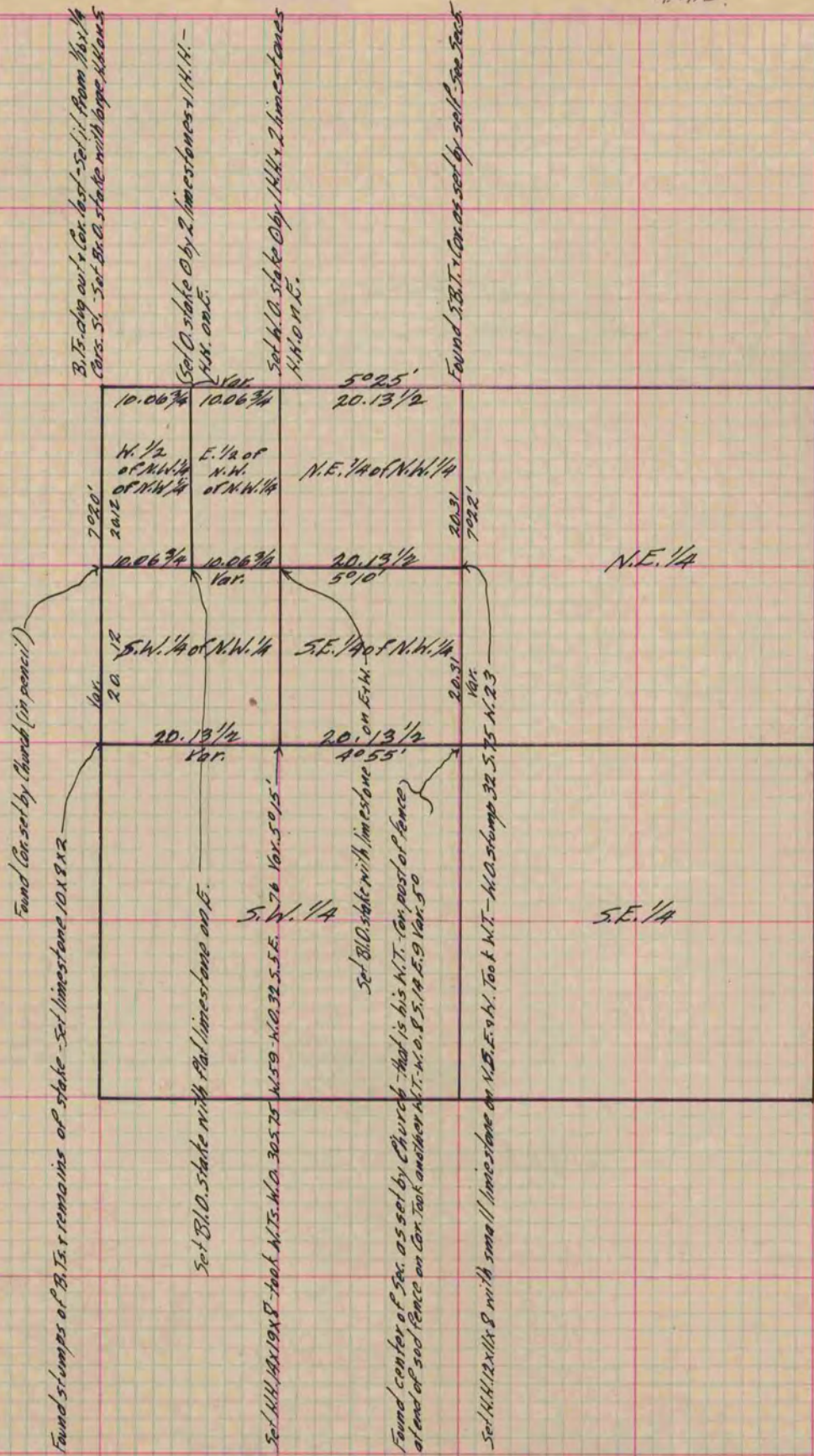
Rock County, Wisconsin, made February the 25 1868

I hereby certify that the following is a correct record of said survey as made by me.

COUNTY BUILDING
IN CITY OF БЕЛОIT

(Signed) S. D. Locke
R. H. B.

County Surveyor.



Copied from P. 260 Vol. 1. Original County Surveyor's Record.