

PLAT AND RECORD

Of a Survey on Section 23 T 3 R 12 E. of the 4 P. M. in Janesville Township

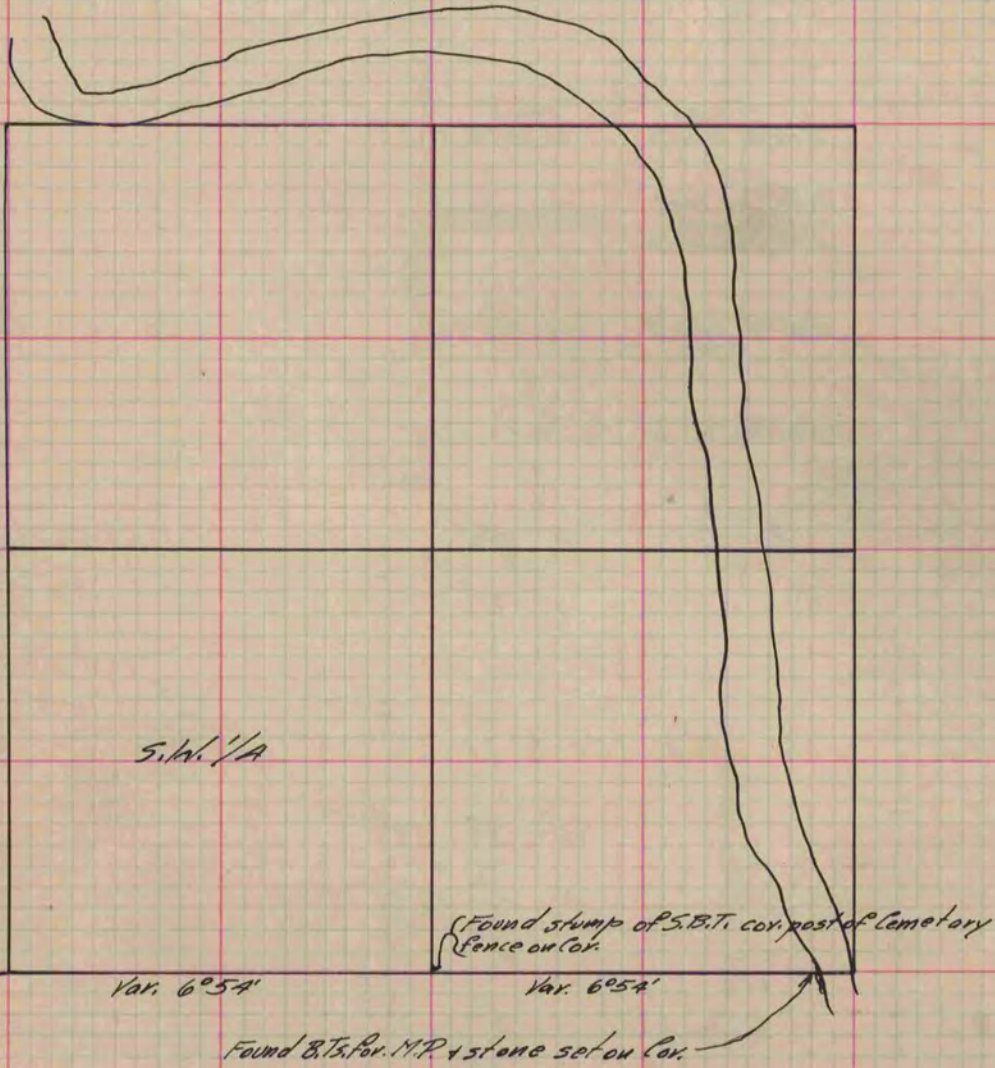
Rock County, Wisconsin, made February the 25 1868

I hereby certify that the following is a correct record of said survey as made by me.

COUNTY BUILDING
IN CITY OF БЕЛОIT

(Signed) S.D. Locke
S.D.L.

County Surveyor.



Copied from P. 261 Vol. 1 Original County Surveyor's Record.