

PLAT AND RECORD

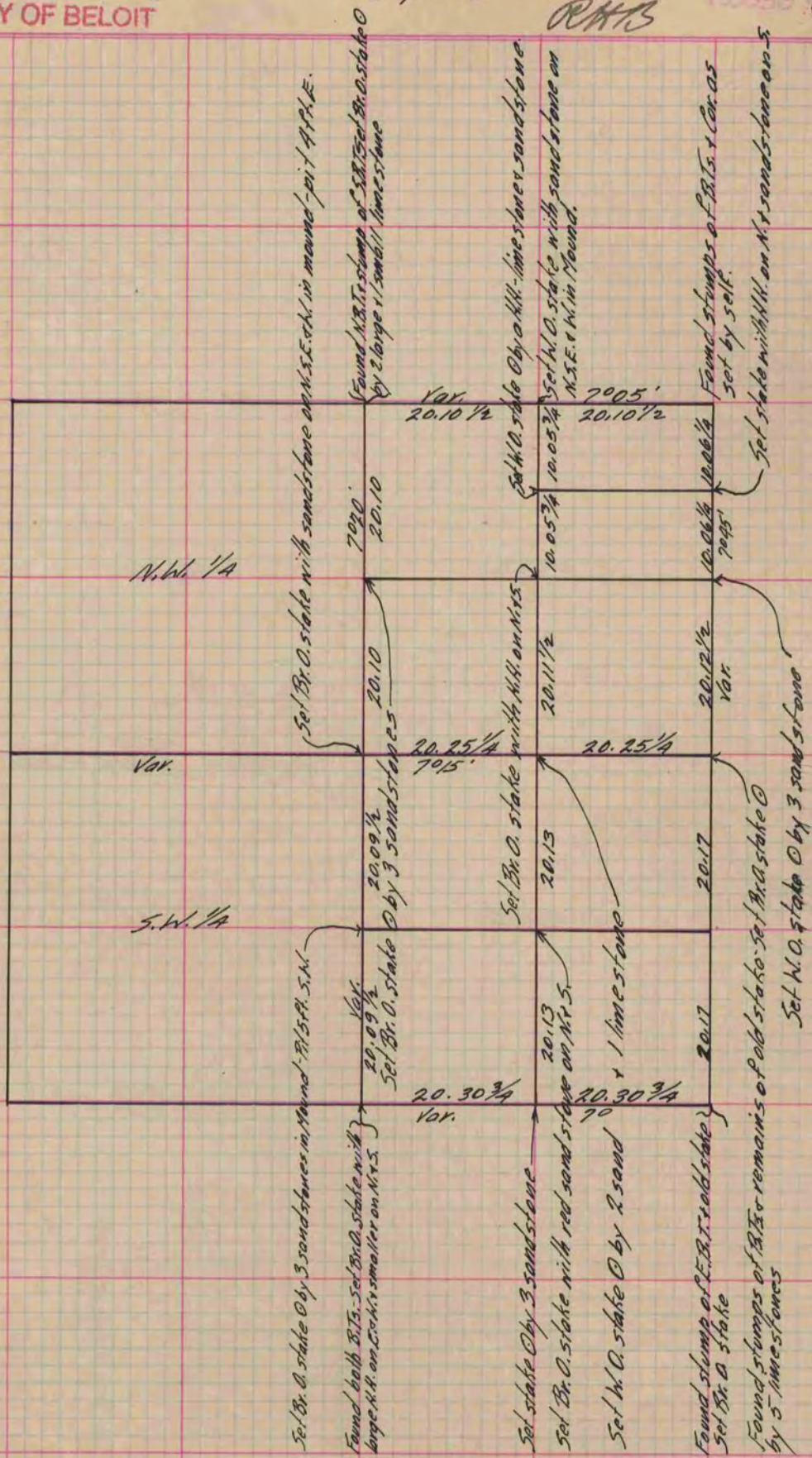
Of a Survey on Section 16 T 3 R 10 E. of the 4 P. M. in Magnolia Township
Rock County, Wisconsin, made April the 7th 1868

I hereby certify that the following is a correct record of said survey as made by me.

COUNTY BUILDING
IN CITY OF БЕЛОIT

(Signed) S.D. Locke
RMS

County Surveyor.



Copied from P. 263 Vol. 1 County Surveyor's Record.