

PLAT AND RECORD

AVAILABLE THROUGH
TERRACE CITY

Of a Survey on Section 1 T 2 R 10 E. of the 4 P. M. in Spring Valley Township

Rock County, Wisconsin, made May 30 + June the 10 1868

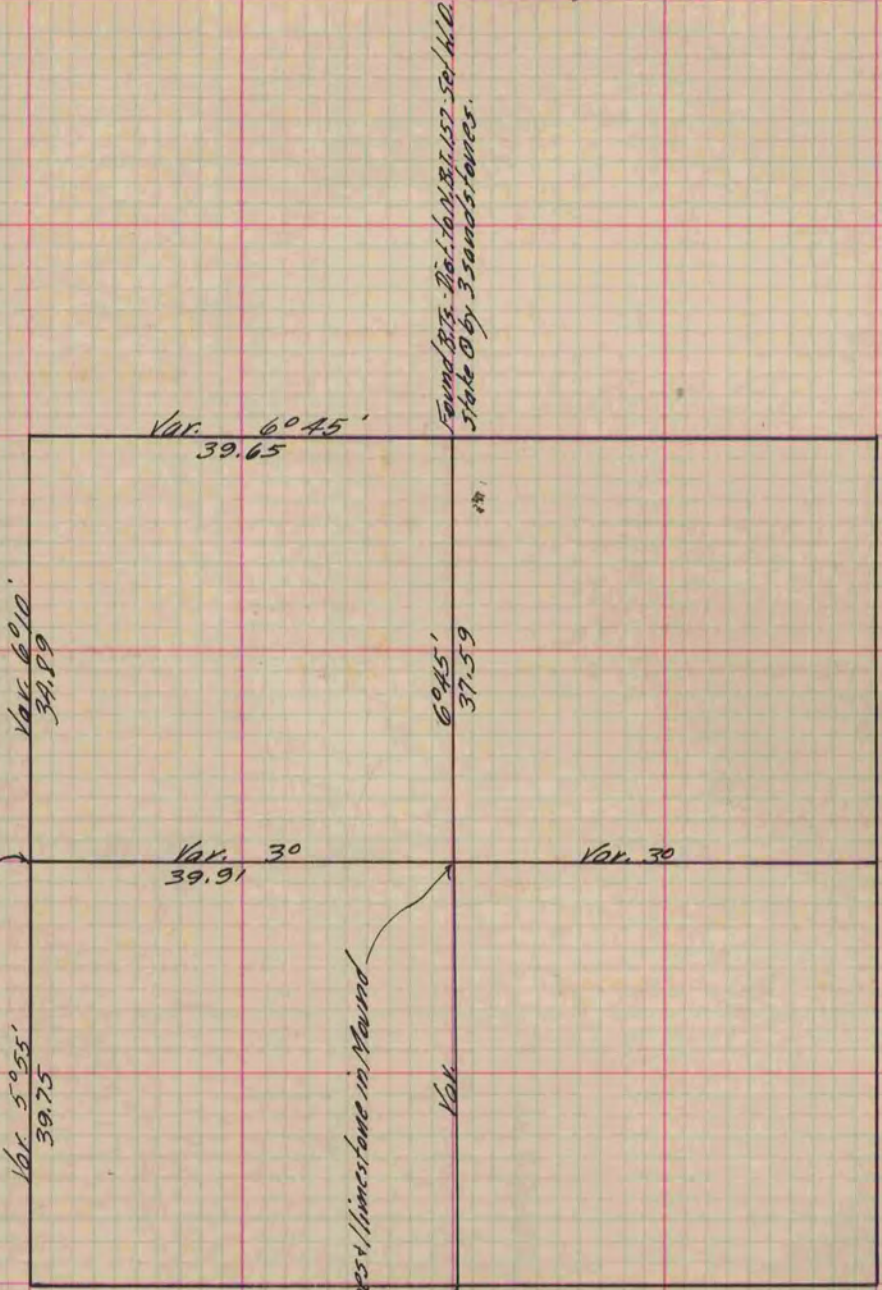
COUNTY BUILDING
IN CITY OF BELOIT

I hereby certify that the following is a correct record of said survey as made by me.

(Signed) S.D. Locke
RLB

County Surveyor.

Found Cor. as set by Church. Reser. slate with limestone marks.



Found Br. D. State Ob. by 3 sandstones.
Stake O by 3 sandstones.

Set Br. D. State Ob. by 3 sandstones + limestone in mound
limestone on N. 1/2 of 6 P.M.

Found Cor. as set by Self.
See Sec. 12

Copied from P. 267 Vol. 1 County Surveyors' Record.