

PLAT AND RECORD

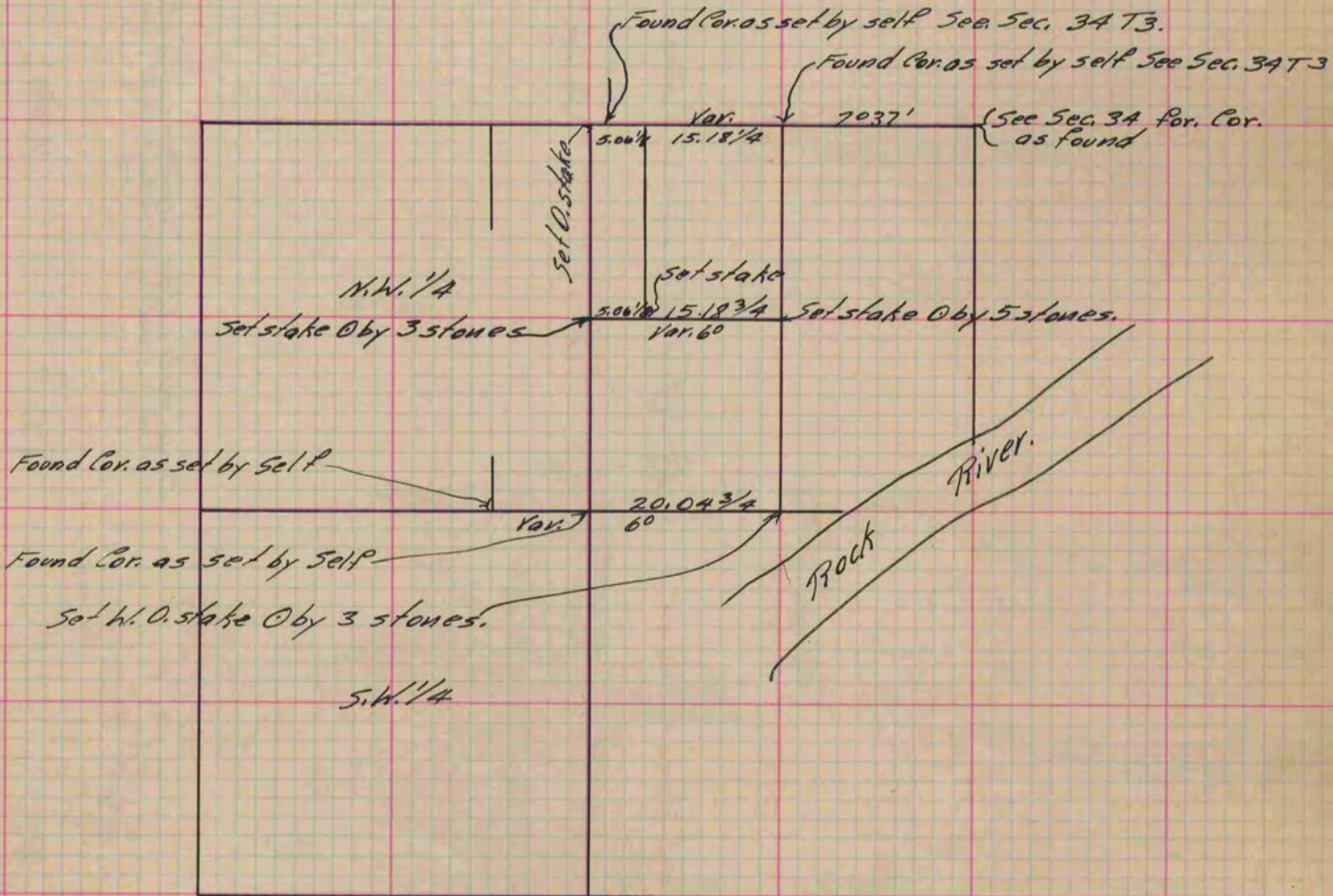
Of a Survey on Section 3 T 2 R 12 E. of the 4 P. M. in Rock Township
Rock County, Wisconsin, made June the 6 1868

I hereby certify that the following is a correct record of said survey as made by me

COUNTY BUILDING
IN CITY OF BELOIT

(Signed) S. D. Locke
S. D. Locke

County Surveyor.



Copied from P. 267 Vol. 1 County Surveyors Record.