

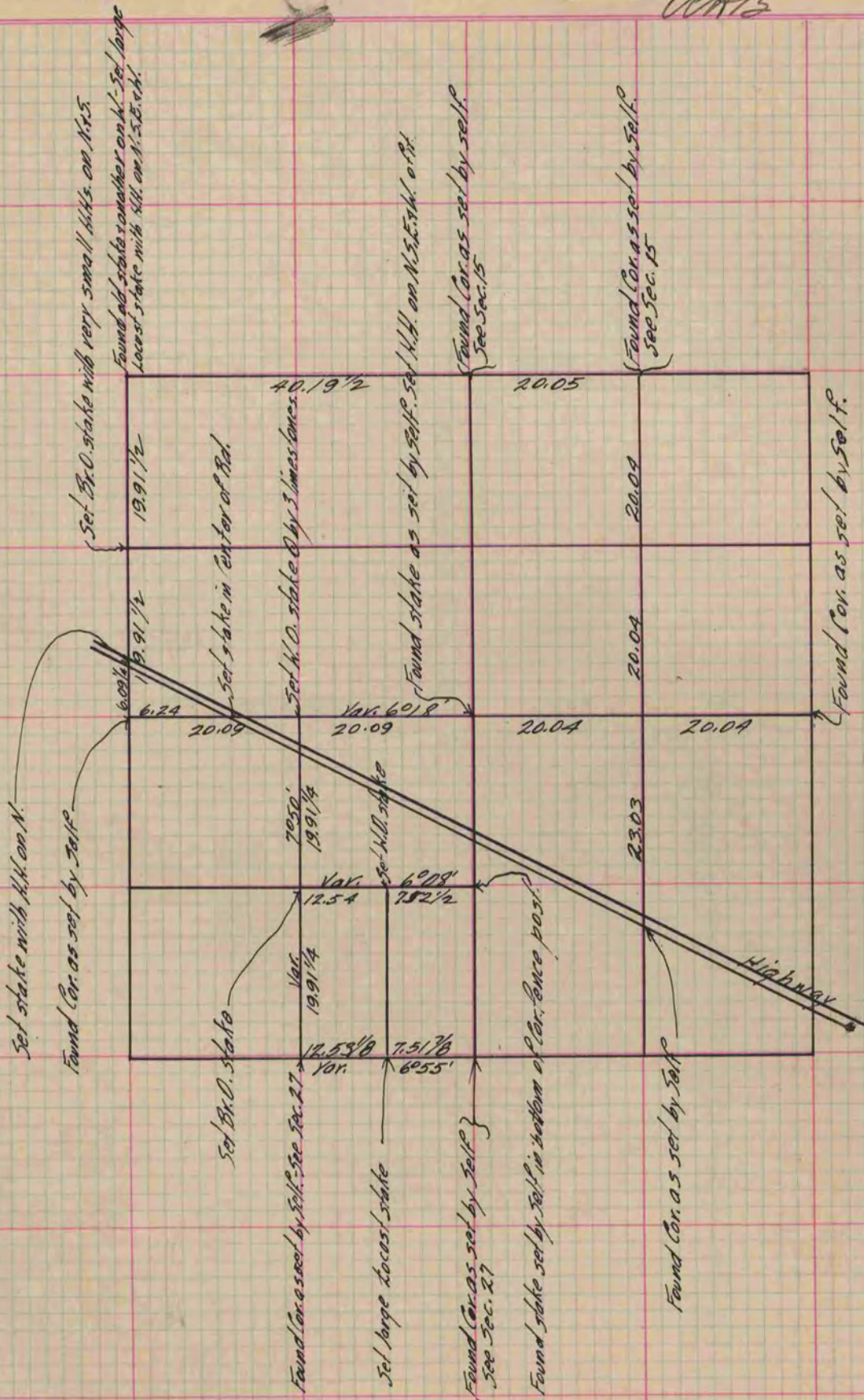
PLAT AND RECORD

Of a Survey on Section 22 T 3 R 13 E. of the 4 P. M. in Harmony Township
Rock County, Wisconsin, made June the 17 1868

I hereby certify that the following is a correct record of said survey as made by me.

(Signed) S. D. Locke
S. D. Locke

County Surveyor.



Copied from P. 270 Vol. 1. County Surveyor's Record.