

PLAT AND RECORD

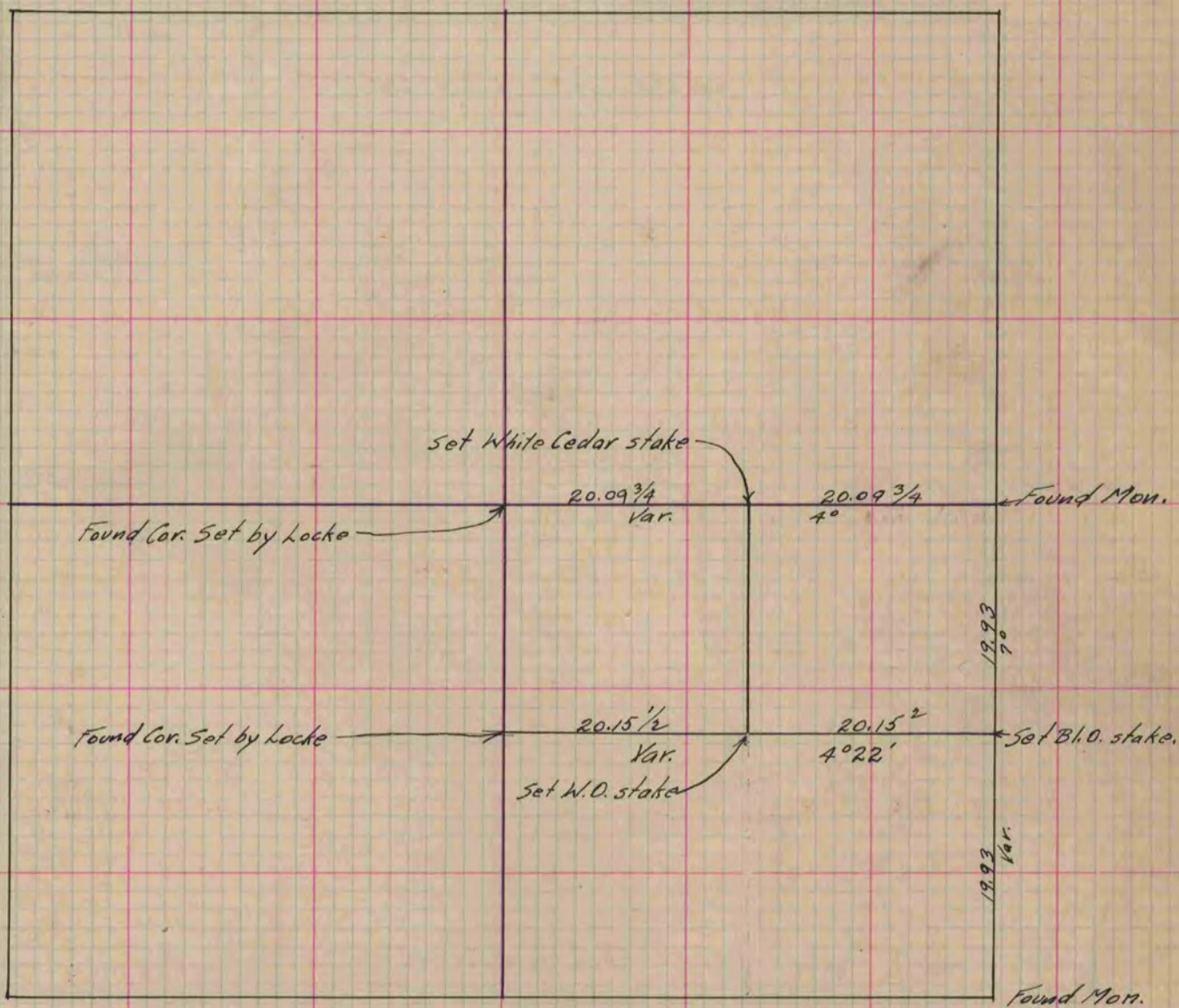
Of a Survey on Section 24 T 2 R 10 E. of the 4 P. M. in Spring Valley Township
Rock County, Wisconsin, made October the 30th 1869

I hereby certify that the following is a correct record of said survey as made by me.

COUNTY BUILDING
IN CITY OF BELOIT

(Signed) R. K. Lee
R. H. B.

{ Deputy
County Surveyor.



Copied from Upper 1/2 of Page 8 Vol. 2 Original County Surveyor's Record.