

# PLAT AND RECORD

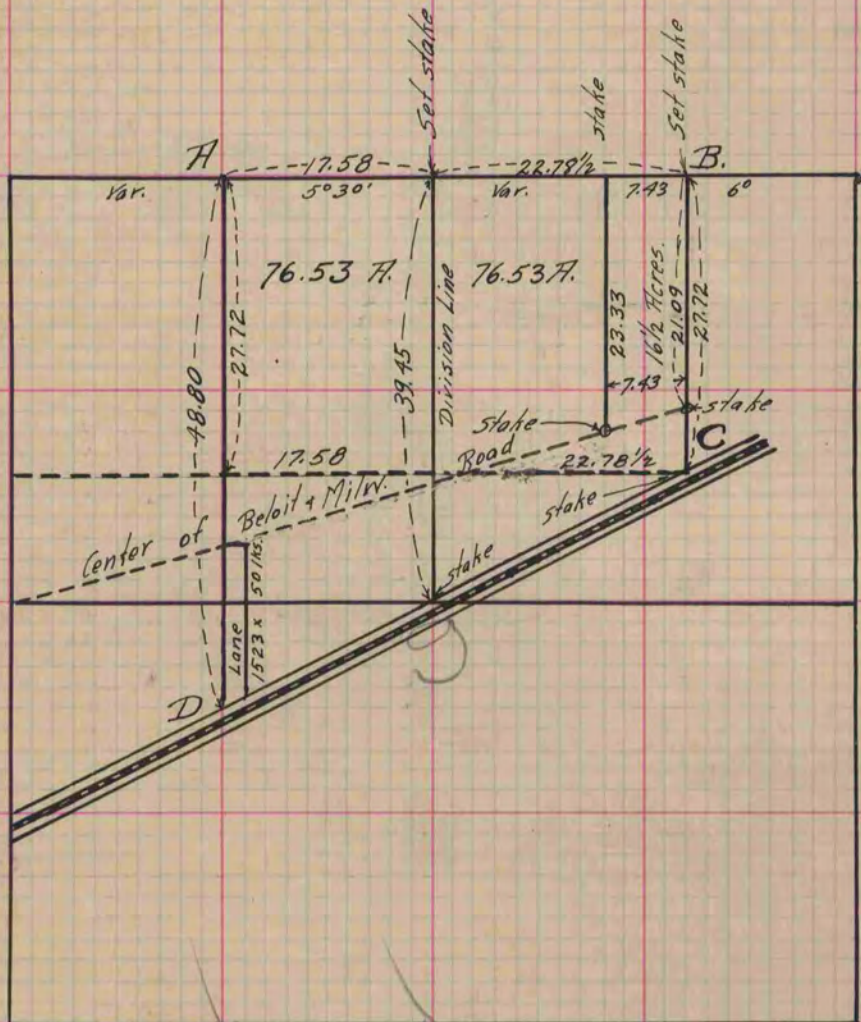
Of a Survey on Section 9 T 1 R 14 E. of the 4 P. M. in Clinton Township  
 Rock County, Wisconsin, made December the 13<sup>th</sup> 1869

I hereby certify that the following is a correct record of said survey as made by me.

COUNTY BUILDING  
 IN CITY OF BELOIT

(Signed) R. H. Lee.  
 R. H. L.

{Deputy  
 County Surveyor.



16

Copied from lower 1/2 of Page 10 Vol. 2. Original County Surveyor's Record.