

PLAT AND RECORD

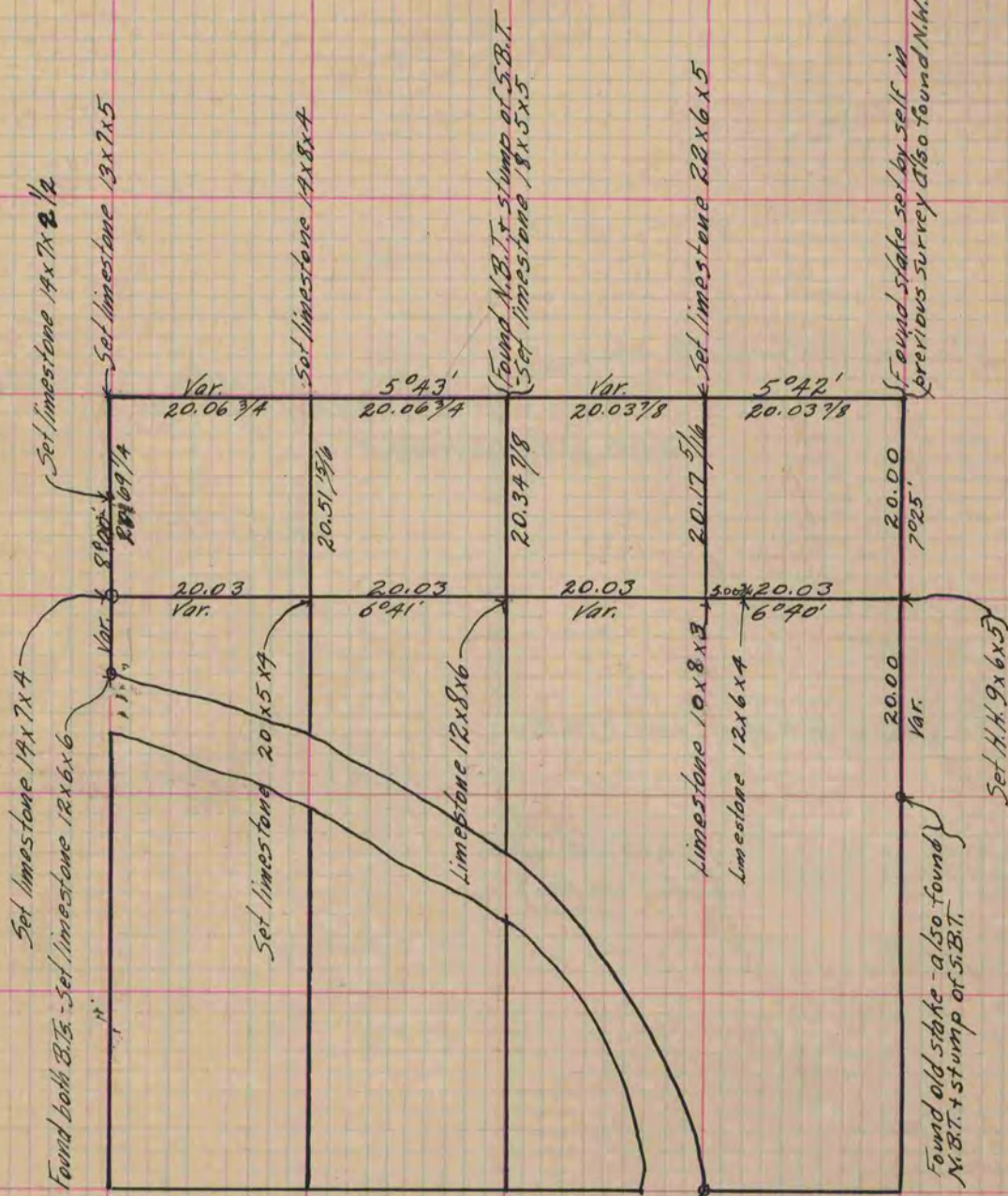
Of a Survey on Section 10 T 3 R 12 E. of the 4 P. M. in Janesville Township

Rock County, Wisconsin, made January & February 12th the 26th & 27th 1870

I hereby certify that the following is a correct record of said survey as made by me.

COUNTY BUILDING
IN CITY OF BELOIT

(Signed) Edward Ruger Deputy
R. H. B. County Surveyor.



Found remains of S.E. B.T. stump + established cor. from it - Set limestone
 19x8x5 + 4 burnt limestones - Took B.Ts. B.L.O. 14 N. 41°50' E. 93
 Br. O. 18 S. 56°50' E. 133
 Cut 2 hacks + blazed trees.

The Meander Cor. on E. Bank + S. line of Sec. was estab. Aug. 2nd 1876
 (Signed) E. Ruger
 Co. Surveyor.

Copied from Page 15 Vol. 2 Original County Surveyor's Record.