

PLAT AND RECORD

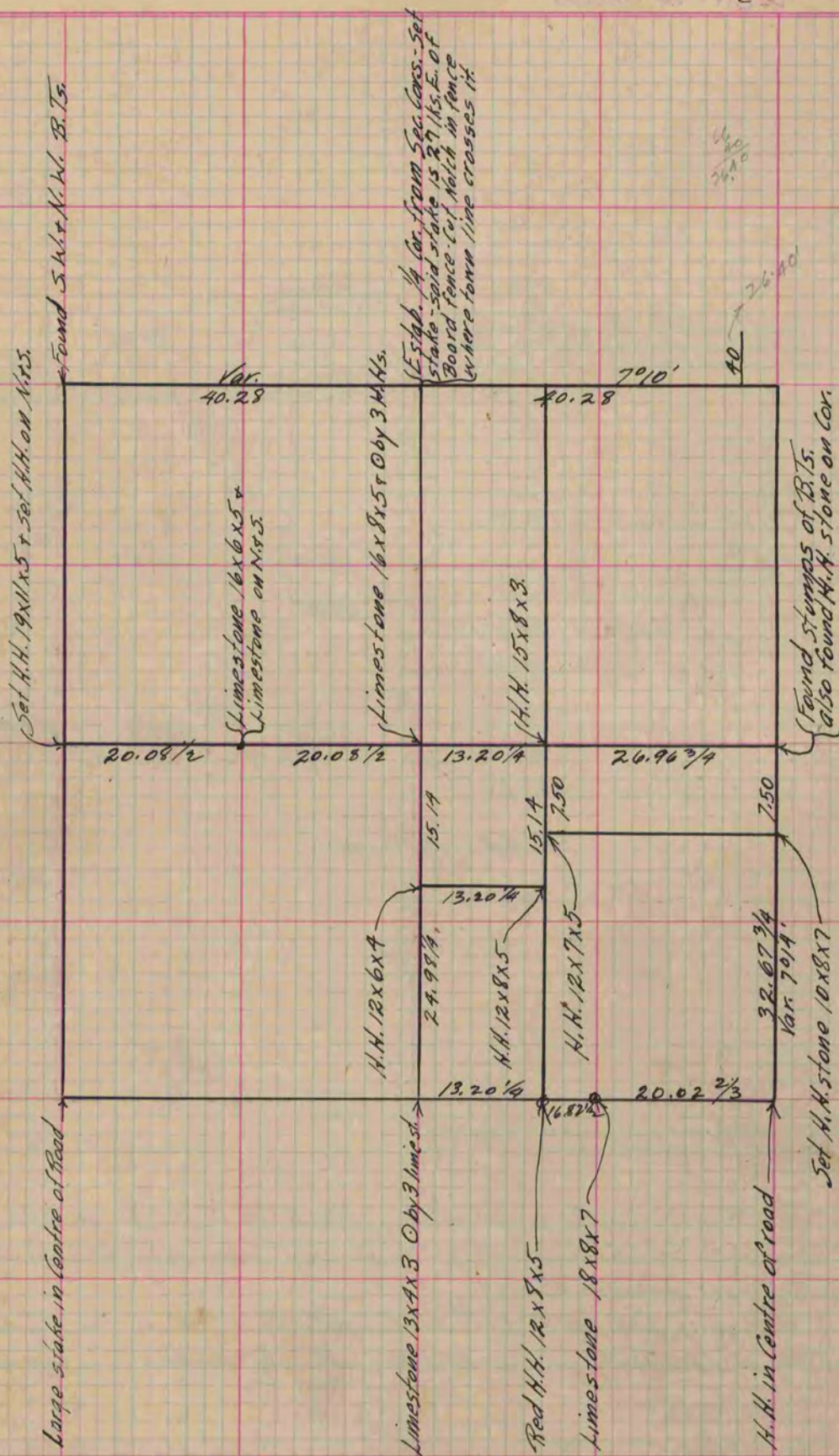
Of a Survey on Section 2 T 3 R 12 E. of the 4 P. M. in Janesville Township

Rock County, Wisconsin, made February the 23rd 1870

I hereby certify that the following is a correct record of said survey as made by me.

COUNTY BUILDING
IN CITY OF БЕЛОIT

(Signed) Edward Ruger Deputy
R.H.B. County Surveyor.



Copied from Lower 1/2 of Page 16 Vol. 2 Original County Surveyor's Record.