

PLAT AND RECORD

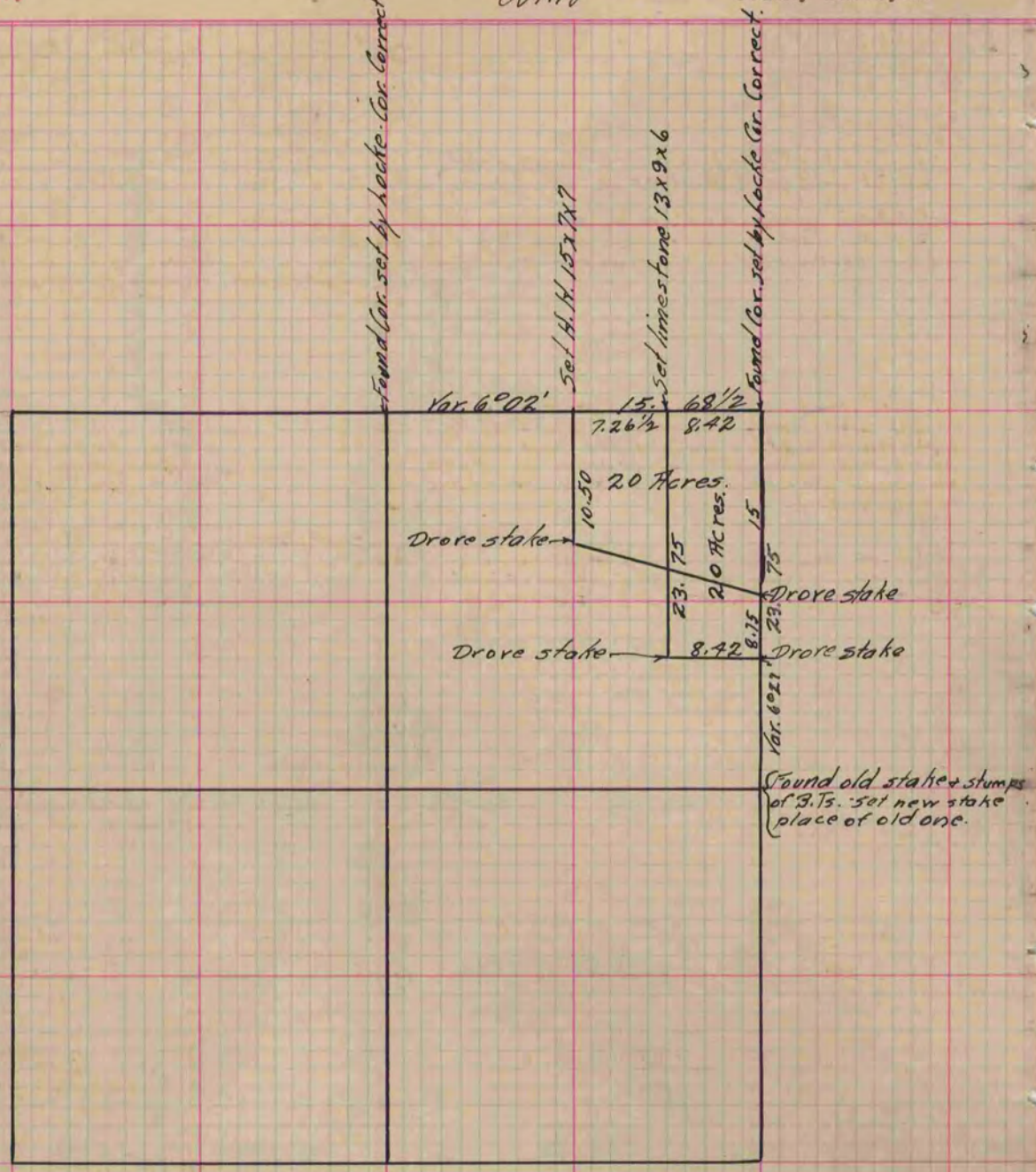
Of a Survey on Section 28 T 2 R 14 E. of the 4 P. M. in Bradford Township
Rock County, Wisconsin, made December the 11 1873

I hereby certify that the following is a correct record of said survey as made by me.

COUNTY BUILDING
IN CITY OF BELOIT

(Signed) Edward Ruger
RMR

County Surveyor.



The Survey was made with reference to setting off 20 Acres in the $N_{1/2}$ part of N.E. 1/4 of said Sec. in two ways that the parties interested might select either method of Division.

Copied from Page 76 Vol. 2 Original County Surveyor's Record.