

# PLAT AND RECORD

Of a Survey on Section 15 T 3 R 11 E. of the 4 P. M. in Center Township

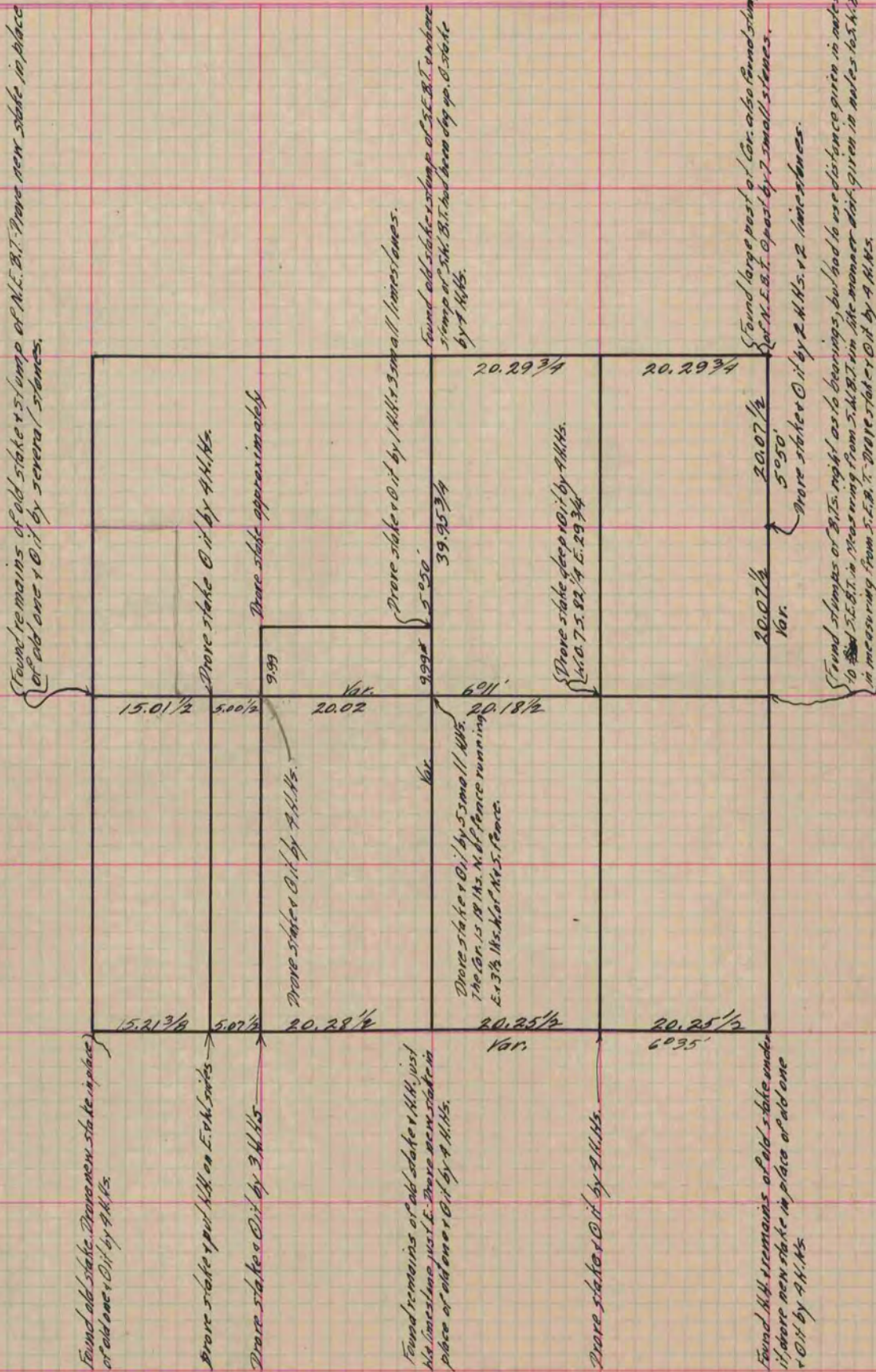
Rock County, Wisconsin, made April the 7th 1875

I hereby certify that the following is a correct record of said survey as made by me.

COUNTY BUILDING  
IN CITY OF BELOIT

(Signed) Edward Ruger  
CRS

County Surveyor.



Copied from P. 139 Vol. 2 Original County Surveyor's Record.