

PLAT AND RECORD

Of a Survey on Section 34 T 4 R 12 E. of the 4 P. M. in Fulton Township

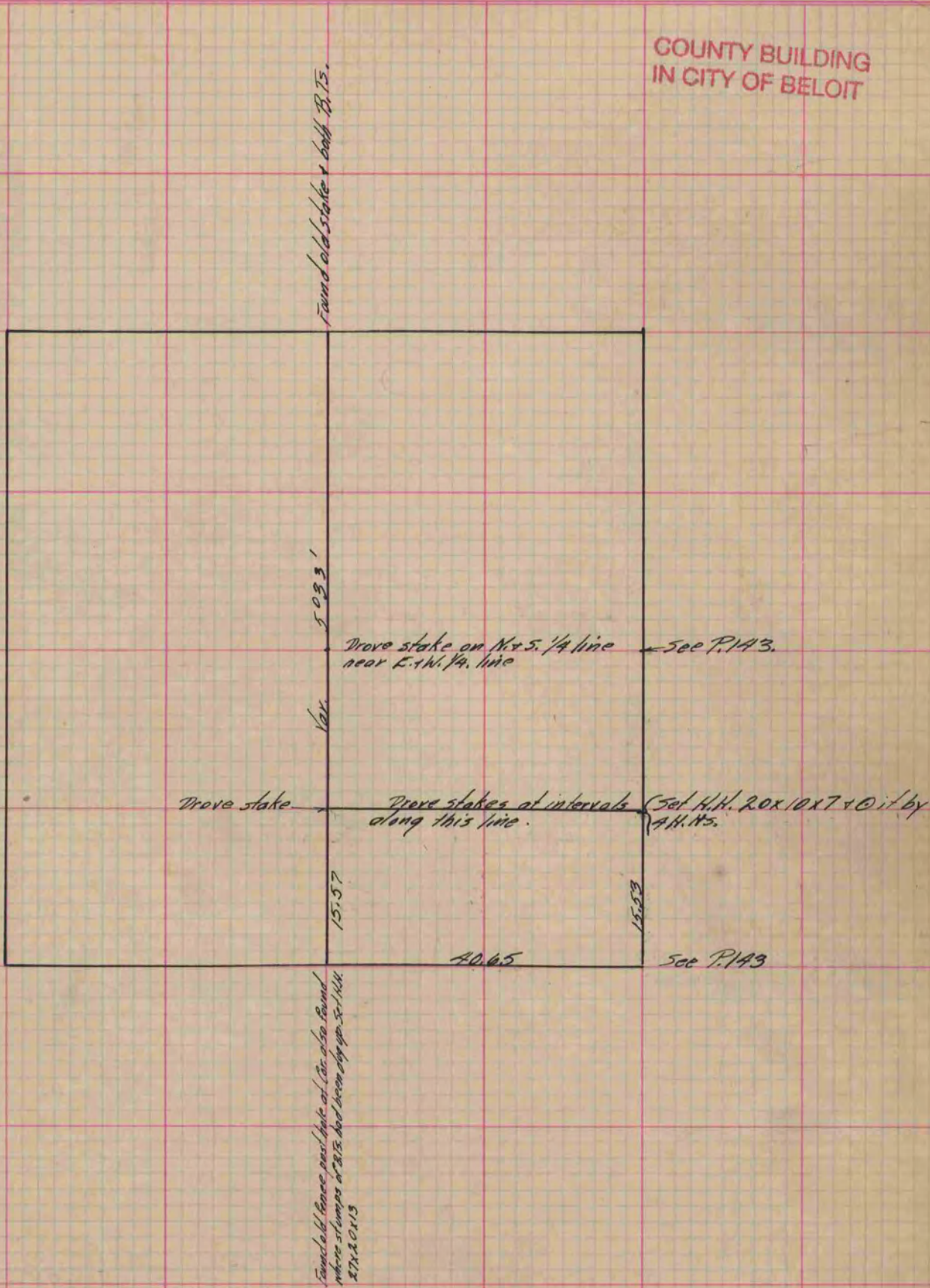
Rock County, Wisconsin, made May the 15 1875

I hereby certify that the following is a correct record of said survey as made by me.

(Signed) Edward Roger
E. R. 13

County Surveyor.

COUNTY BUILDING
IN CITY OF БЕЛОIT



Copied from P. 144 Vol. 2 Original County Surveyors' Record.