

# PLAT AND RECORD

Of a Survey on Section 2 T 1 R 13 E. of the 4 P. M. in Turtle Township

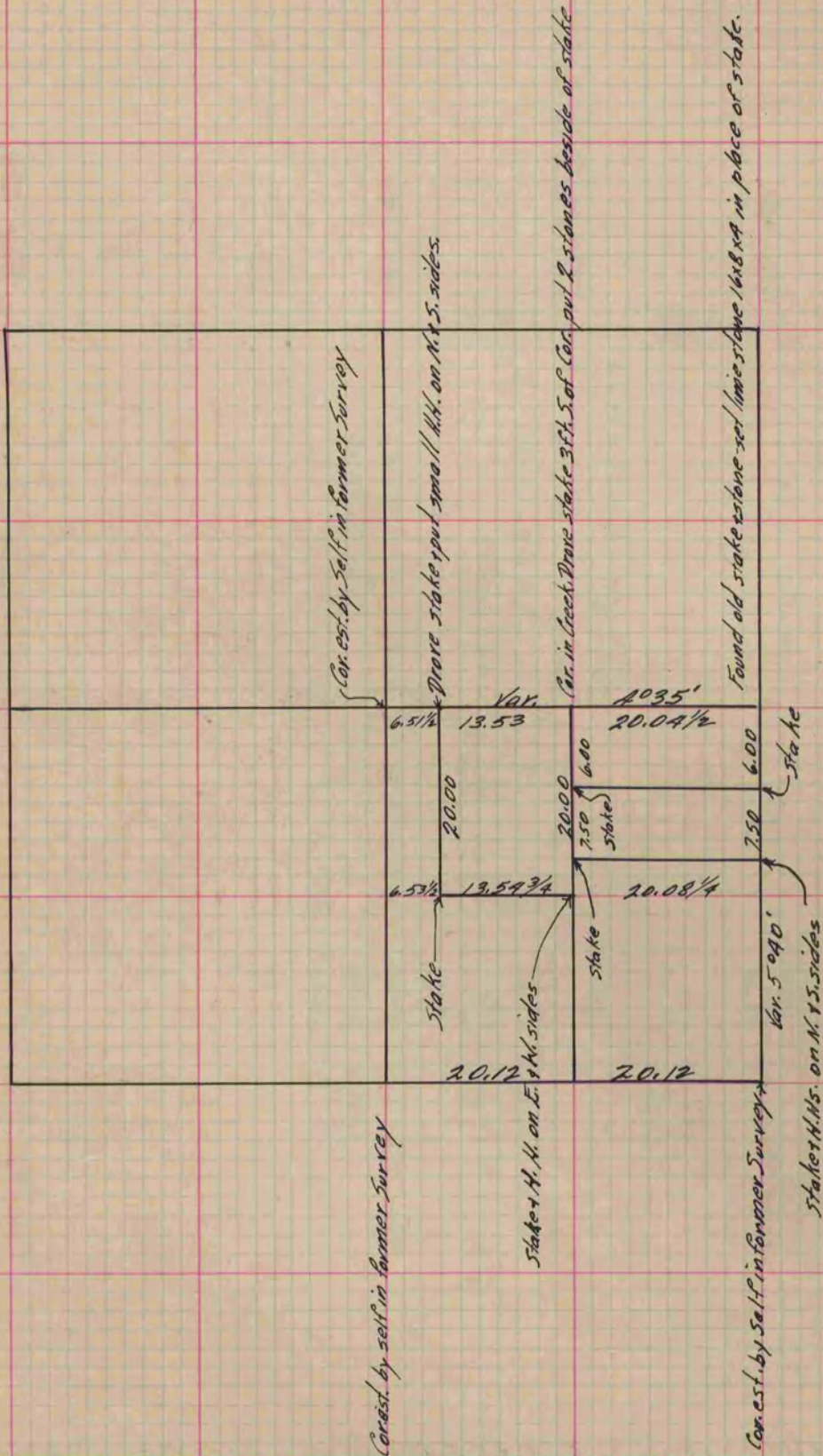
Rock County, Wisconsin, made January the 12 + 13 1876

I hereby certify that the following is a correct record of said survey as made by me.

COUNTY BUILDING  
IN CITY OF БЕЛОИТ

*(Signed) Edward Ruger*  
R.A.B.

County Surveyor.



*Copied From P. 156 Vol. 2 County Surveyor's Record.*

13.53
7.50
6.00
2.50
16.53
10.84