

PLAT AND RECORD

Of a Survey on Section 9 T 3 R 12 E. of the 4 P. M. in Sanesville Township

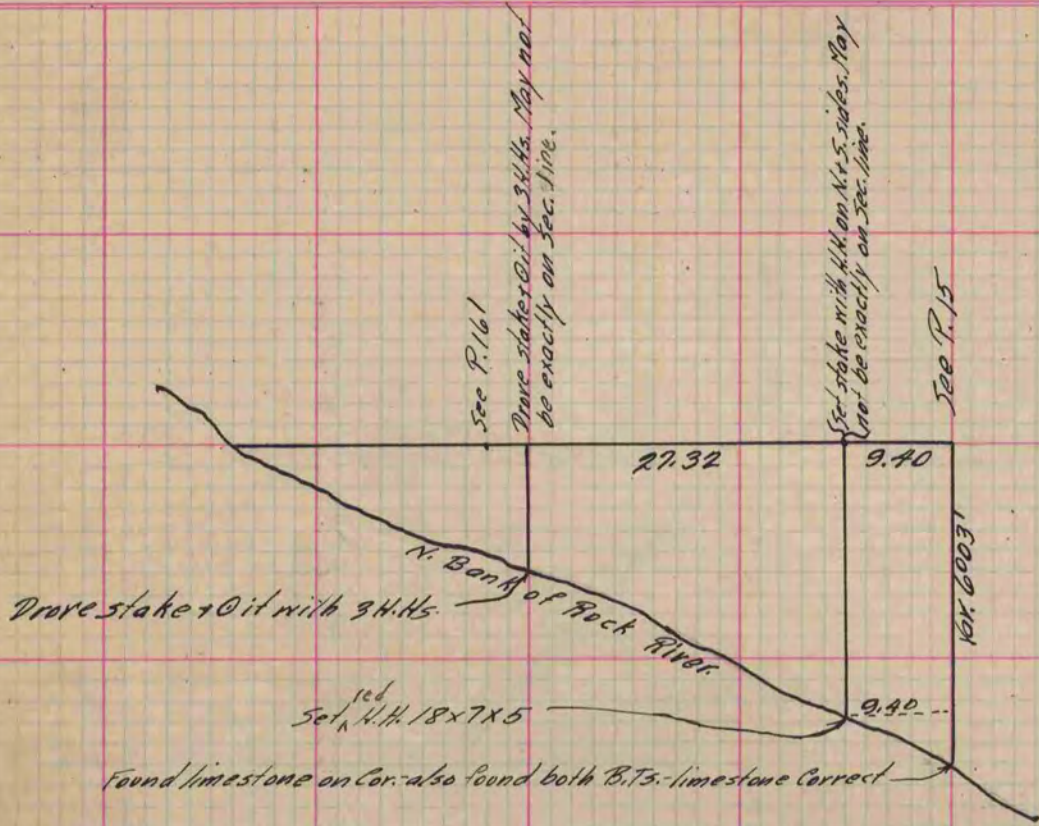
Rock County, Wisconsin, made March the 11 1876

I hereby certify that the following is a correct record of said survey as made by me.

COUNTY BUILDING
IN CITY OF БЕЛОIT

(Signed) Edward Ruger
RMR

County Surveyor.



Copied from Upper 1/2 of P. 62 Vol. 2 Original County Surveyor's Record.

Sec. 22 T4 R. 14 - Lima Township.

At a point in the N. & S. 1/4 line of Sec. 22 Lima 18.31 chs. N. of the S. 1/4 Cor. of said Sec. drove a 3/8" iron bolt with a head on & 0 it with 3 H.H.s. also drove an iron bolt, at a point 1.75 H. of above Cor. & 0 bolt with stones. There being Cors. between Gould & Ensign.

The above survey was made by me June 16 - 1876

(Signed) Edward Ruger
County Surveyor.

Copied from P. 162 Vol. 2 Original County Surveyor's Record