

PLAT AND RECORD

COUNTY BUILDING
IN CITY OF BELOIT

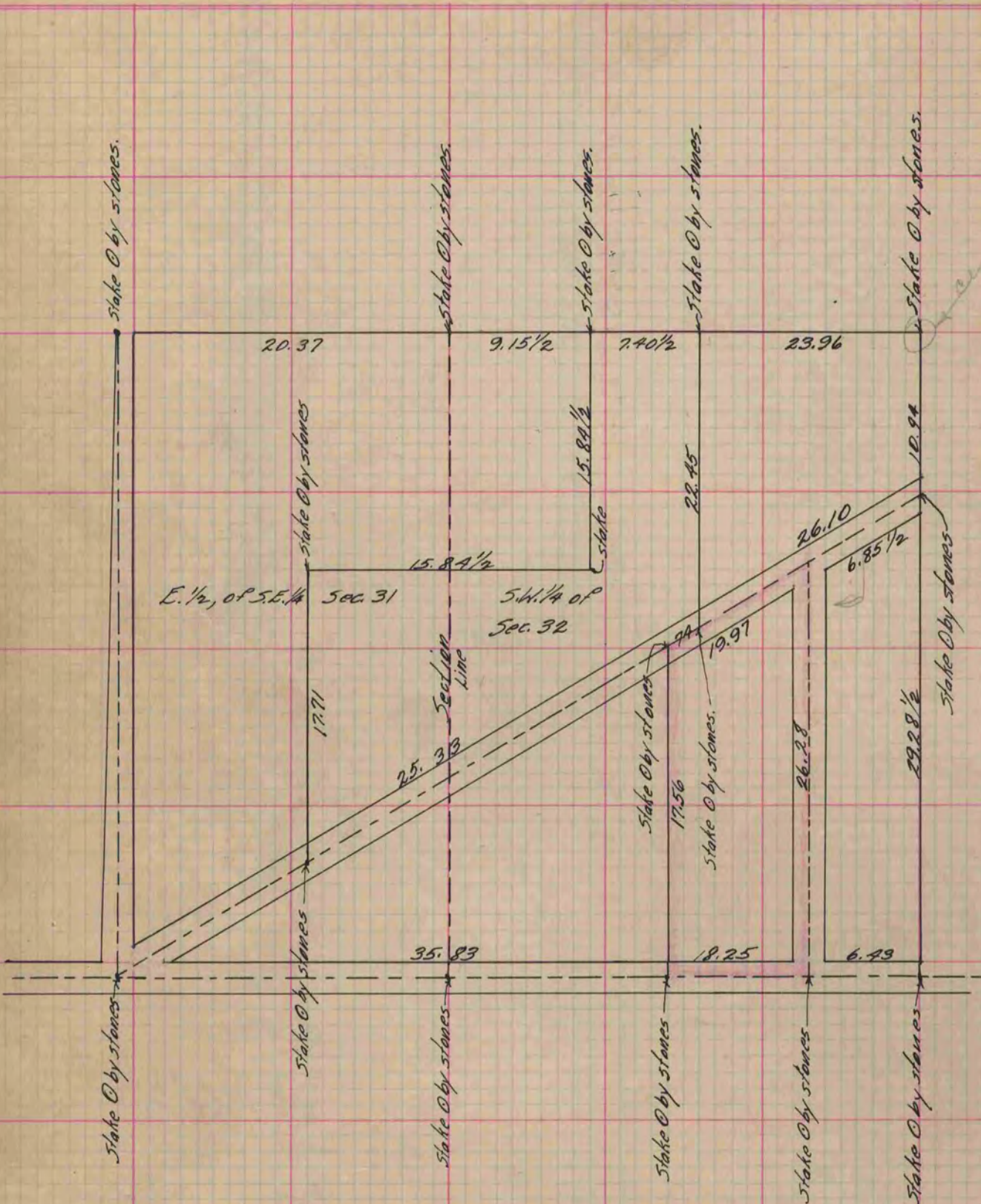
Of a Survey on ^{S.W. 1/4} Section ^{32 + E. 1/2, S.E. 1/4} Sec. 31 T 3 R 12 E. of the 4 P. M. in Janesville Township

Rock County, Wisconsin, made Aug. 22 + 29rd + Sept. the 4 1876

I hereby certify that the following is a correct record of said survey as made by me.

(Signed) Edward Ruger
D.R.B.

County Surveyor.



Copied from P. 168 Vol. 2 Original County Surveyors Record.