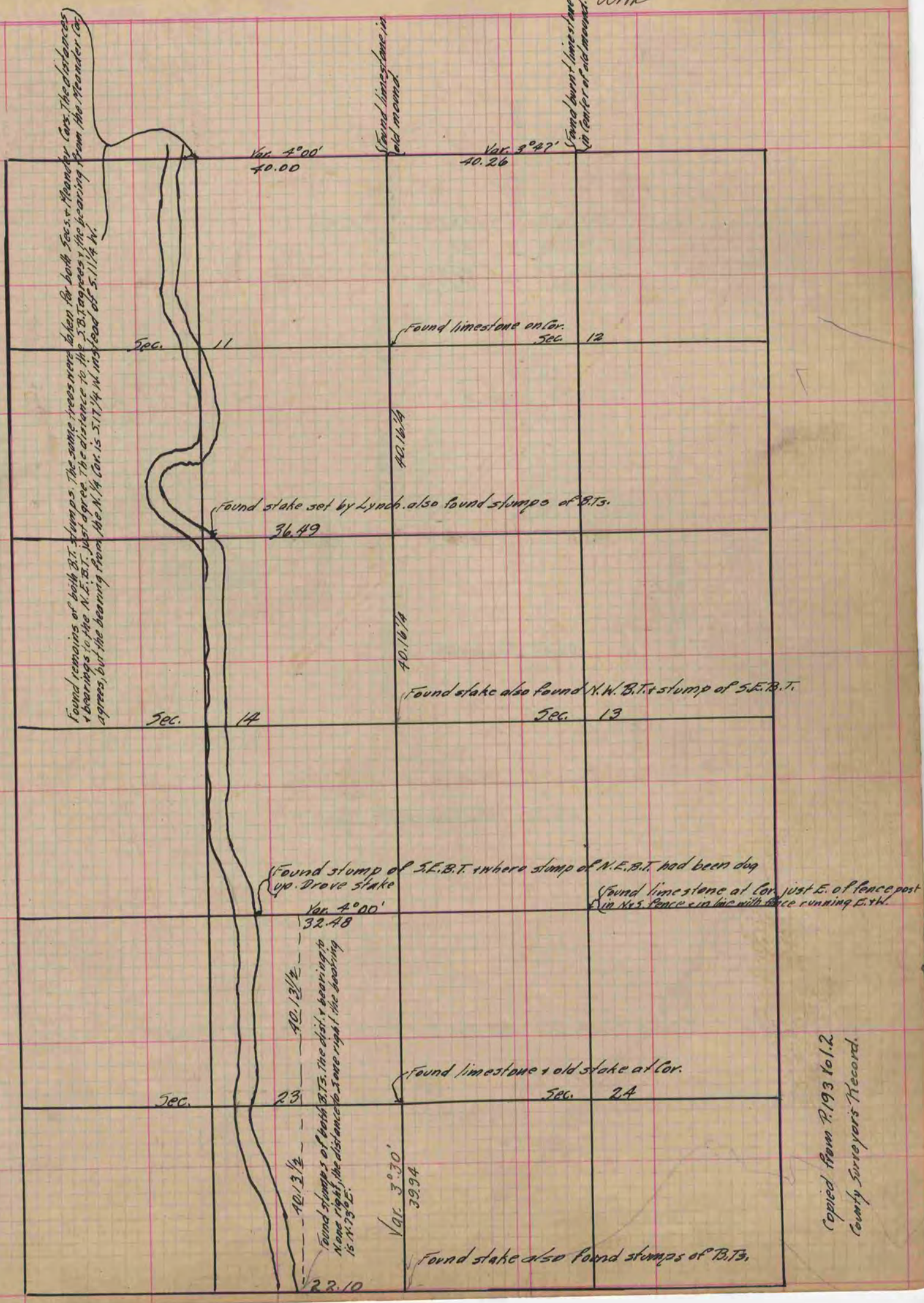


PLAT AND RECORD

Of a Survey on Sections 11, 12, 13, 14 T 1 R 12 E. of the 4 P. M. in Beloit Township

Rock County, Wisconsin, made January the 14, 15, 16 - 1912 1878

I hereby certify that the following is a correct record of said survey as made by me.
**COUNTY BUILDING
IN CITY OF БЕЛОИТ** (Signed) Edward Ruger County Surveyor.



Copied from P. 193 to 1.2
County Surveyors Record.