

PLAT AND RECORD

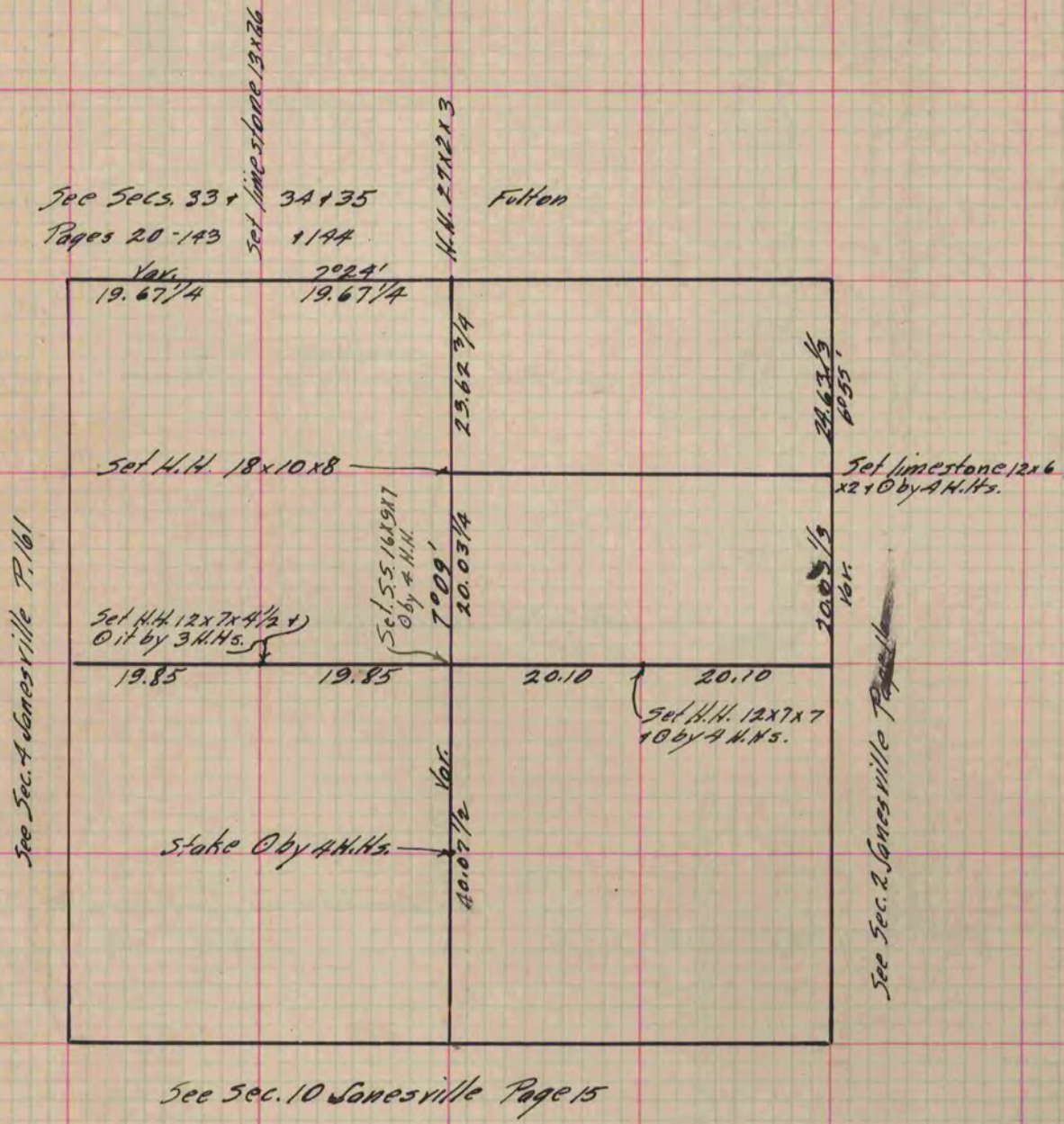
Of a Survey on Section 3 T 3 R 12 E. of the 4 P. M. in Janesville Township
Rock County, Wisconsin, made January the 29+30 1878

I hereby certify that the following is a correct record of said survey as made by me.

COUNTY BUILDING
IN CITY OF BELOIT

(Signed) Edward Ruser
RNB

County Surveyor.



Copied From Page 194 Vol. 2 County Surveyor's Record.