

PLAT AND RECORD

247

Of a Survey on Section 32 T 1 R 10 E. of the 4 P. M. in AYON Township

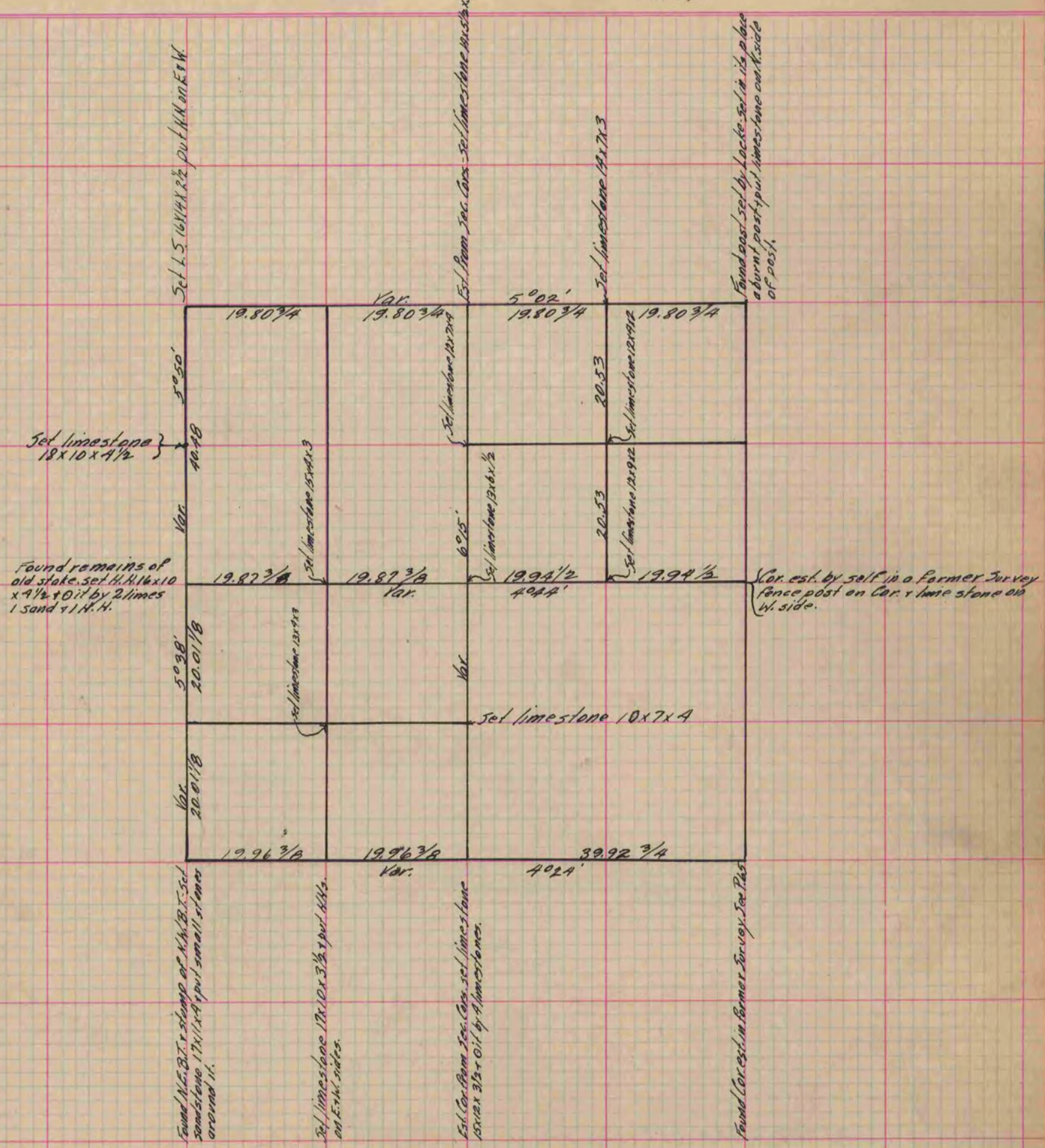
Rock County, Wisconsin, made the _____ the _____ 19____

I hereby certify that the following is a correct record of said survey as made by me.

COUNTY BUILDING
IN CITY OF BELOIT

(Signed) *Edward Roger*
R.R. 13

County Surveyor.



Copied from P. 201 Vol. 2 County Surveyor's Record.