

PLAT AND RECORD

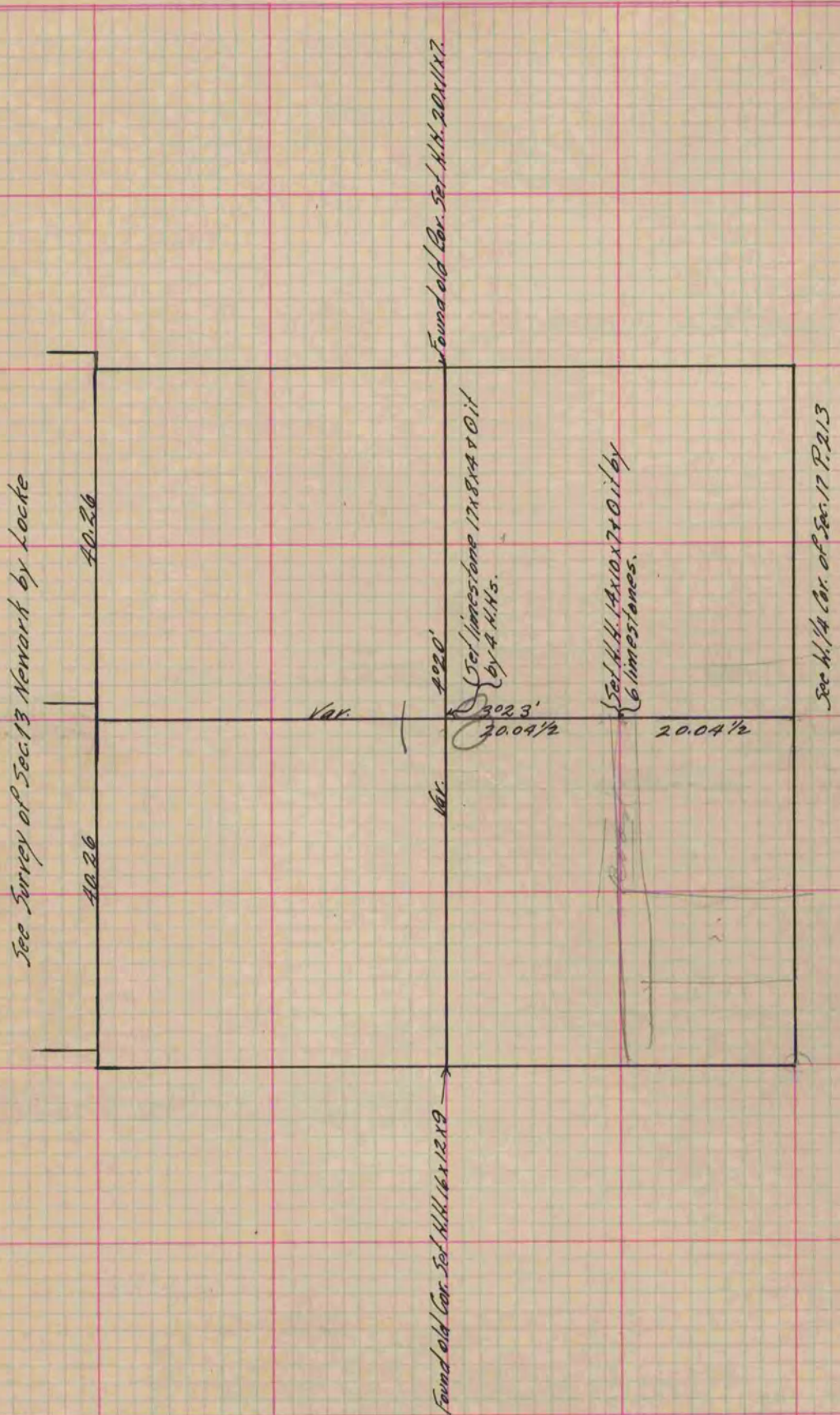
Of a Survey on Section 18 T 1 R 12 E. of the 4 P. M. in Beloit Township
Rock County, Wisconsin, made June the 20 1878

I hereby certify that the following is a correct record of said survey as made by me.

COUNTY BUILDING
IN CITY OF БЕЛОИТ

(Signed) Edward Roger
RAB

County Surveyor.



Copied from P. 214 Vol. 2 County Surveyor's Record.