

PLAT AND RECORD

COUNTY BUILDING
IN CITY OF BELOIT

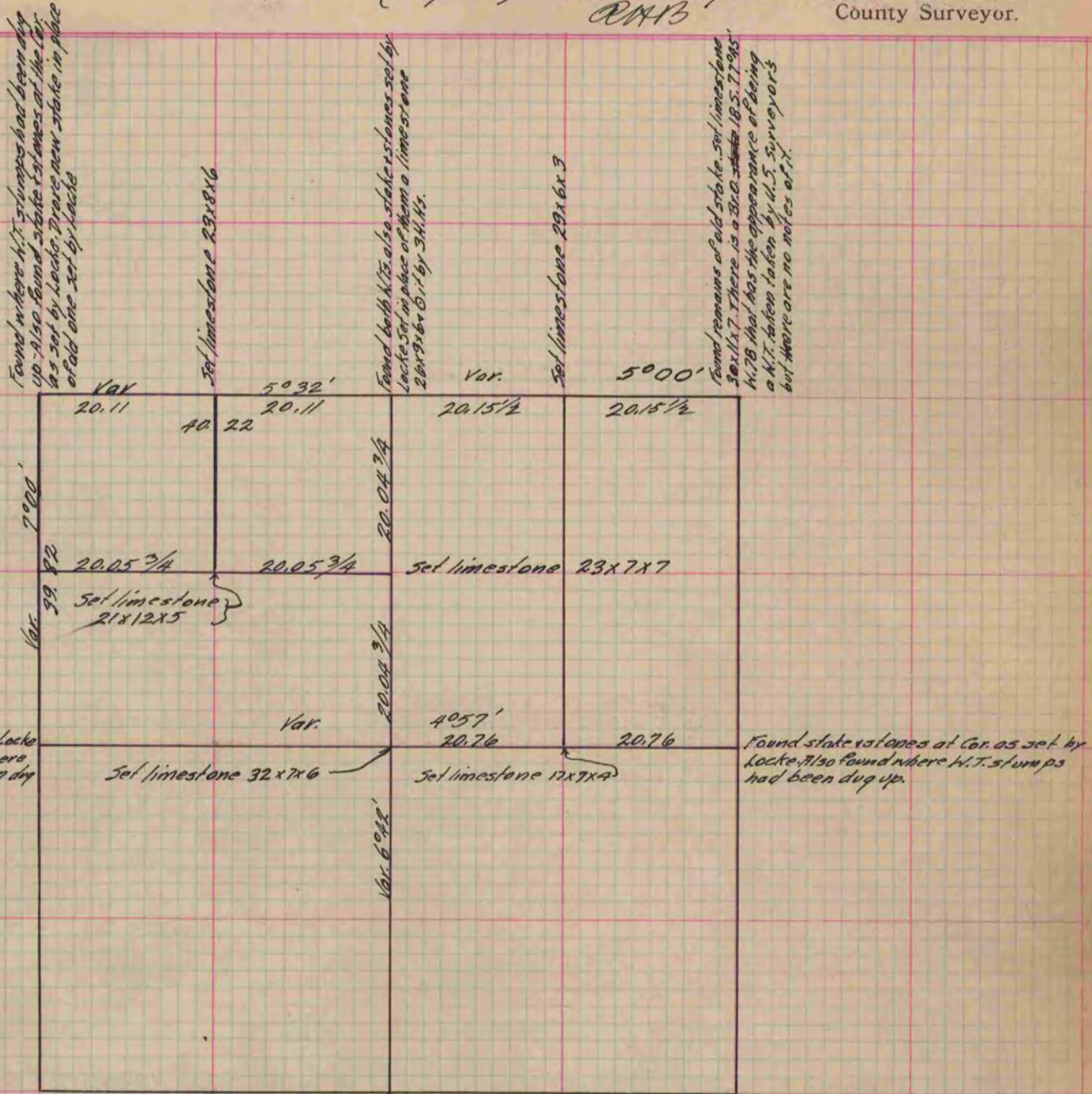
Of a Survey on Section 8 T 2 R 10 E. of the 4 P. M. in Spring Valley Township

Rock County, Wisconsin, made April 30 + May the 1 1879

I hereby certify that the following is a correct record of said survey as made by me.

(Signed) Edward Ruger
RMR

County Surveyor.



Found Cor. as est. by Locke correct. Also found where the W.T. stumps had been dug up.

Found stake & stones at Cor. as set by Locke. Also found where W.T. stumps had been dug up.

Found stake & stones at Cor. as set by Locke. Also found where W.T. stumps had been dug up. Cor. at inter. of fences

Lock & Church had sub-divided this Sec. under the state law, fixing the center equi-distant from the opposite cor. responding 1/4 Cors. I est. the Centre at the point of intersection of right lines between the Cor. responding 1/4 Cors.

(Signed) Edward Ruger
County Surveyor.

Copied from P. 216 Vol. 2 County Surveyor's Record.