

PLAT AND RECORD

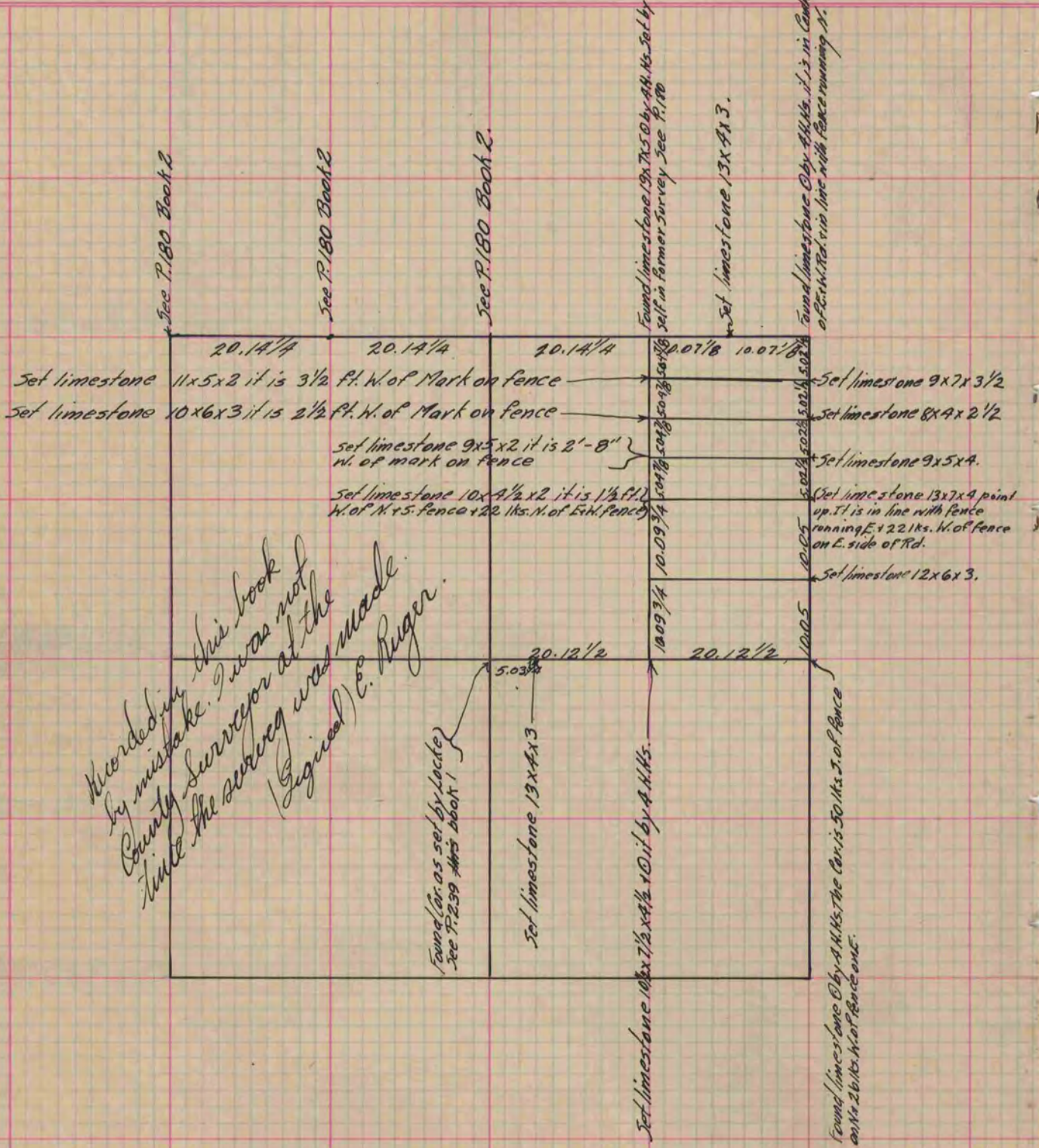
Of a Survey on Section 34 T 3 R 12 E. of the 4 P. M. in Janesville Township
Rock County, Wisconsin, made March the 31st 1882

I hereby certify that the following is a correct record of said survey as made by me.

COUNTY BUILDING
IN CITY OF БЕЛОIT

(Signed) Edward Reger
E. R.

County Surveyor.



Copied from P. 223 Vol. 2 Original County Surveyor's Record