

PLAT AND RECORD

Of a Survey on Section 3 T 2 R 11 E. of the 4 P. M. in Plymouth Township

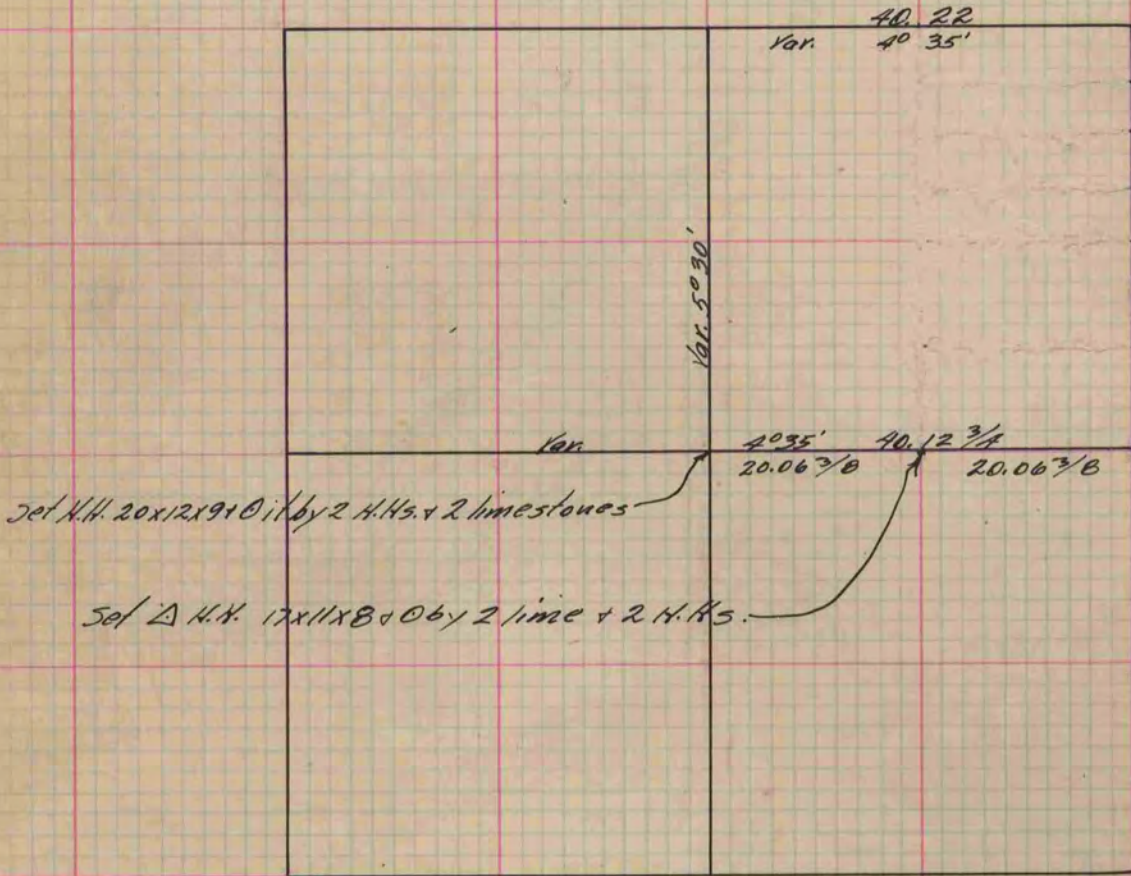
Rock County, Wisconsin, made April the 15th 1886

I hereby certify that the following is a correct record of said survey as made by me.

COUNTY BUILDING
IN CITY OF BELOIT

(Signed) Edward Roger
RRB

County Surveyor.



Copied from P. 225 Vol. 2 County Surveyor's Record.