

PLAT AND RECORD

Of a Survey on Sections 22 & 15 T 3 R 14 E. of the 4 P. M. in *Soberserve* Township

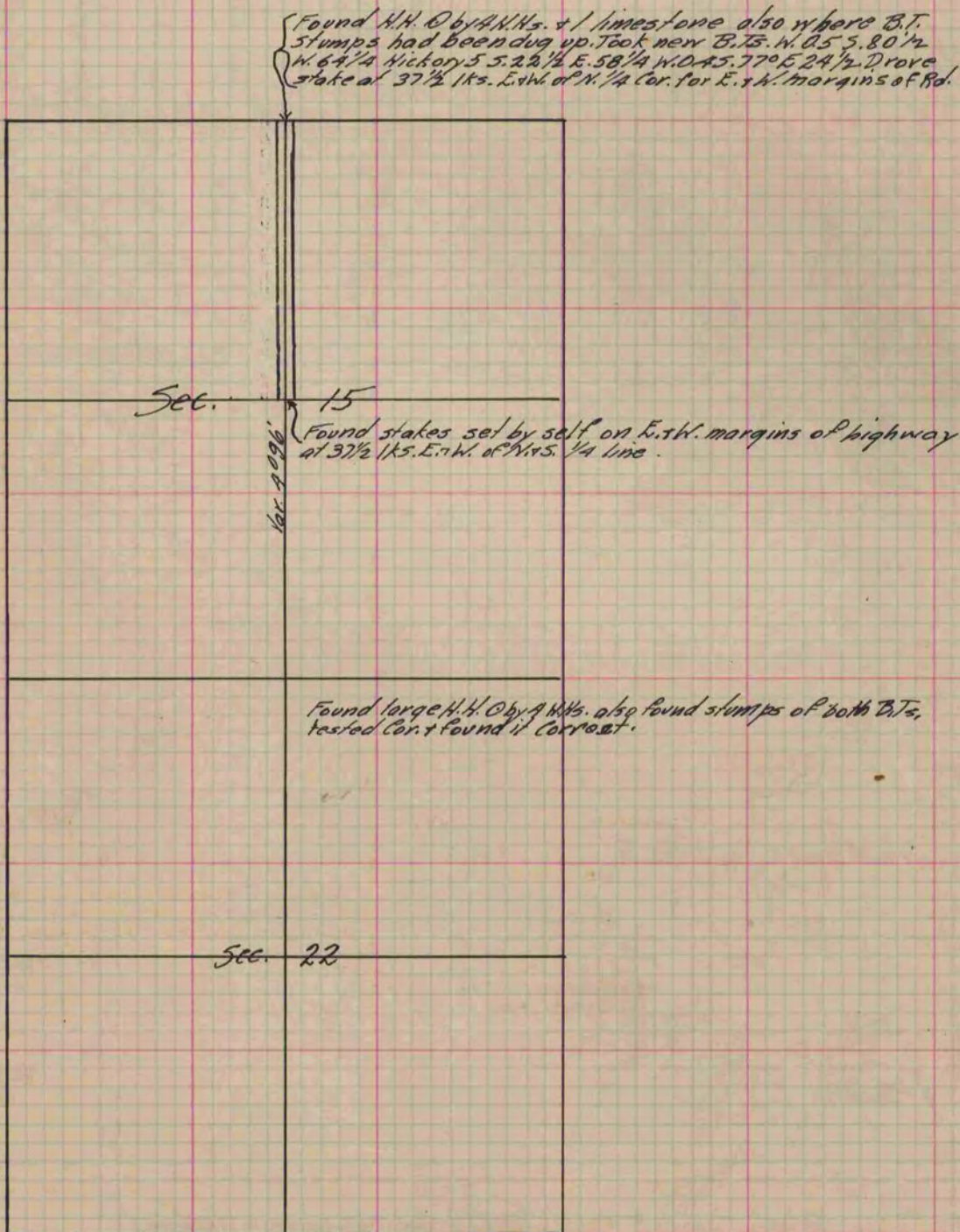
Rock County, Wisconsin, made *May* the *17* 1886

I hereby certify that the following is a correct record of said survey as made by me.

COUNTY BUILDING
IN CITY OF BELOIT

(Signed) *Edward Ryger*
ERM

County Surveyor.



Copied from P. 229 Vol. 2. County Surveyor's Record.