

# PLAT AND RECORD

285

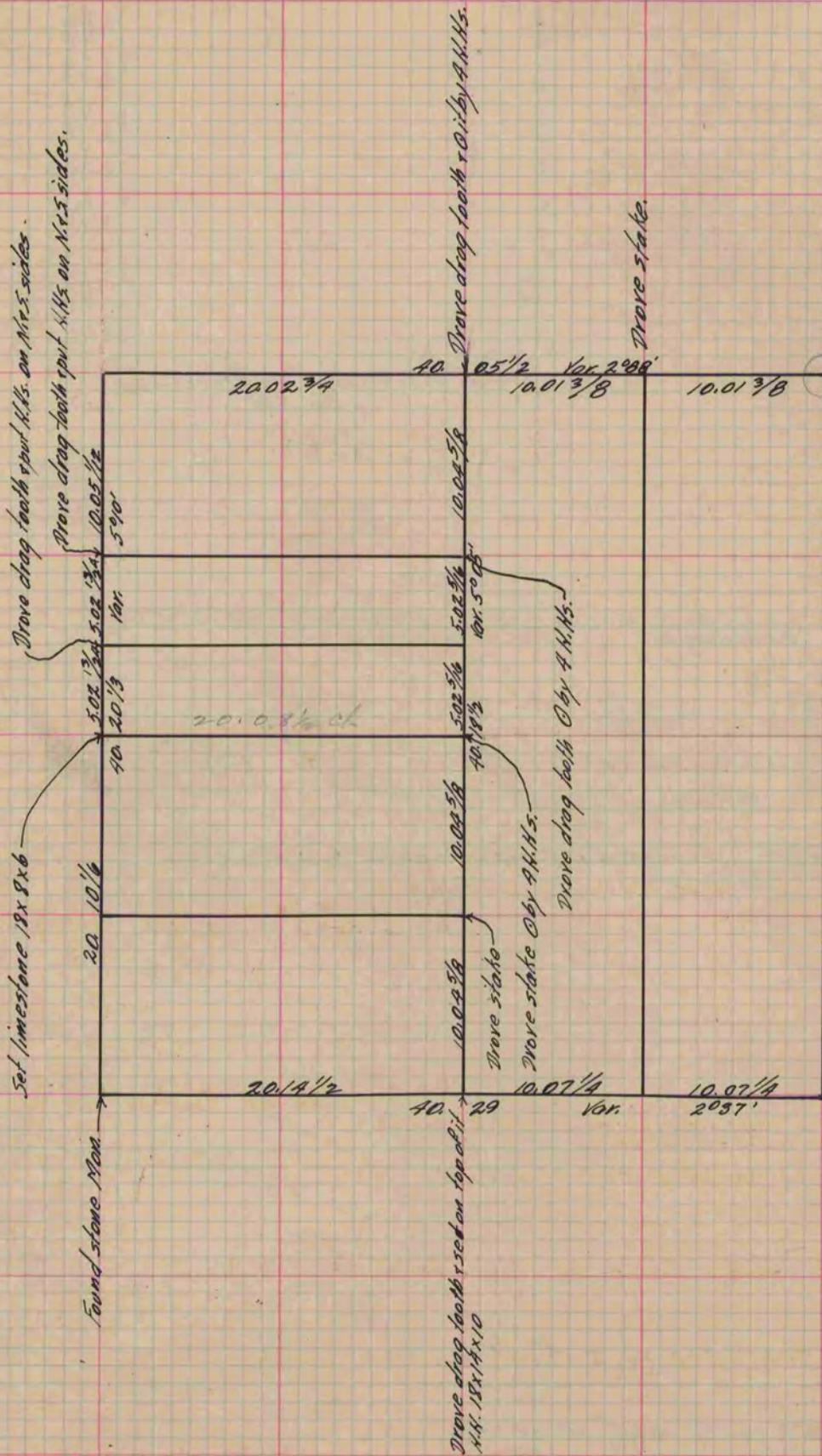
Of a Survey on Section  $2\frac{1}{2}$  14 T 3 R 13 E. of the 4 P. M. in *Harmony* Township  
 Rock County, Wisconsin, made *November* the *15* 1886

I hereby certify that the following is a correct record of said survey as made by me.

COUNTY BUILDING  
 IN CITY OF BELoit

*(Signed) Edward Rieger*  
*RMH*

County Surveyor.



Copied From P. 237 Vol. 2 County Surveyor's Record.