

PLAT AND RECORD

Of a Survey on Section 6 T 3 R 14 E. of the 4 P. M. in Johnstown Township

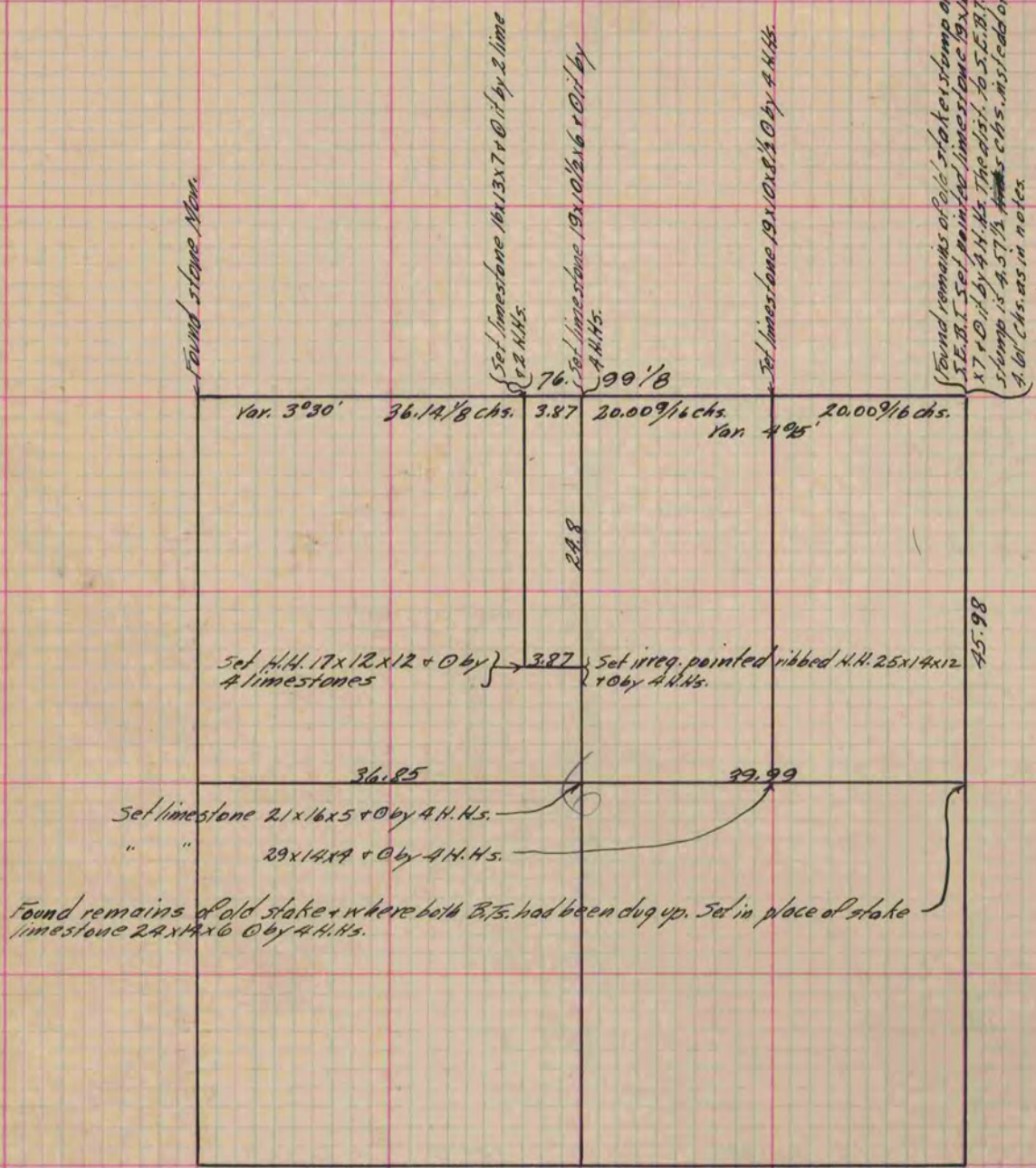
Rock County, Wisconsin, made November the 23+24 1886

I hereby certify that the following is a correct record of said survey as made by me.

COUNTY BUILDING
IN CITY OF БЕЛОIT

(Signed) Edward Ruger
RMR

County Surveyor.



Copied from P. 238 Vol. 2 County Surveyor's Record.