

# PLAT AND RECORD

Of a Survey on Section 24 T 2 R 10 E. of the 4 P. M. in Spring Valley Township

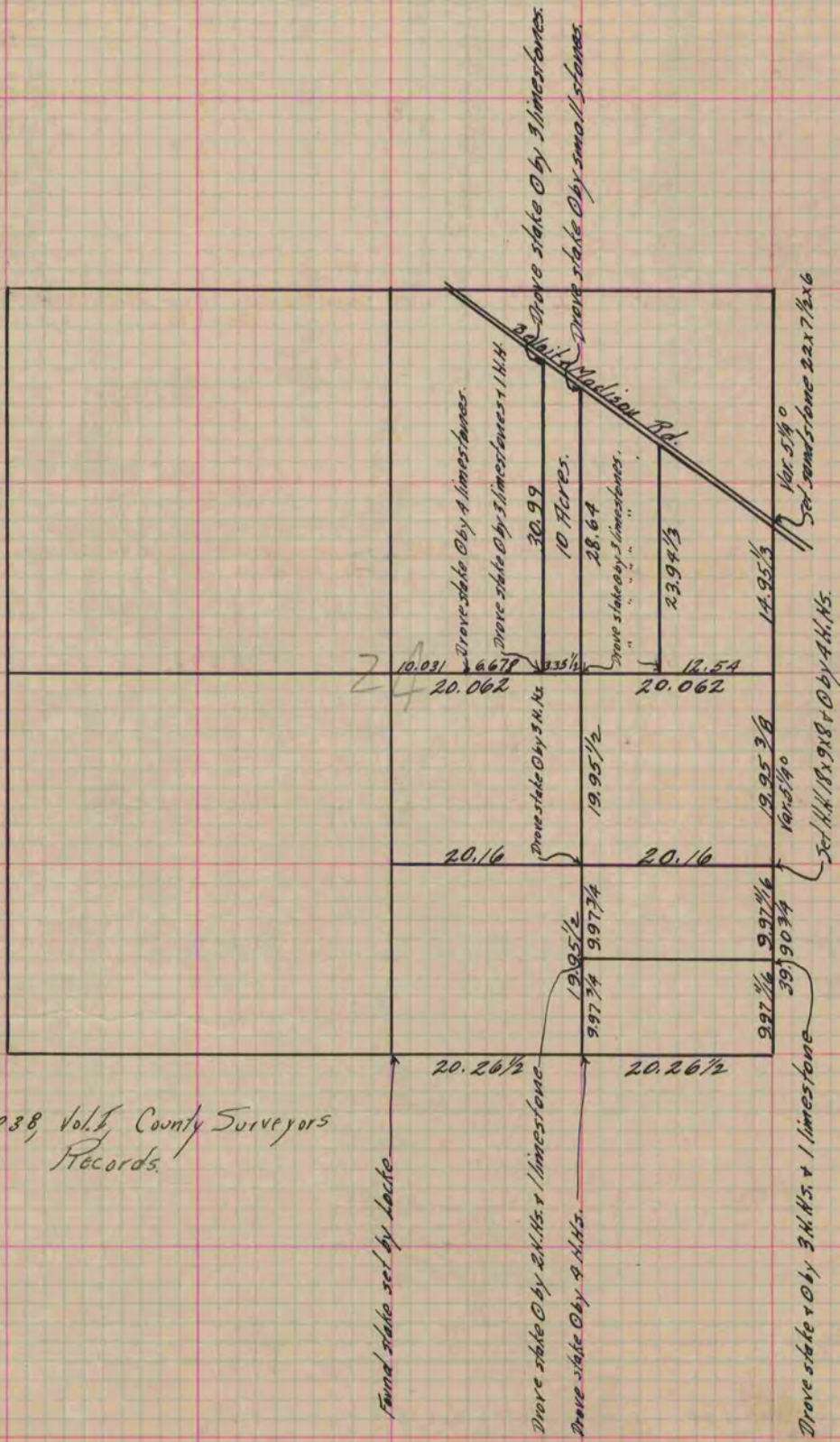
Rock County, Wisconsin, made October the 6 1885  
April 1884

I hereby certify that the following is a correct record of said survey as made by me.

(Signed) Edward Roger  
AMS

County Surveyor.

COUNTY BUILDING  
 IN CITY OF БЕЛОIT



See P. 238, Vol. 1 County Surveyors  
 Records.

Copied from P. 239 Vol. 2 County Surveyors Record.