

# PLAT AND RECORD

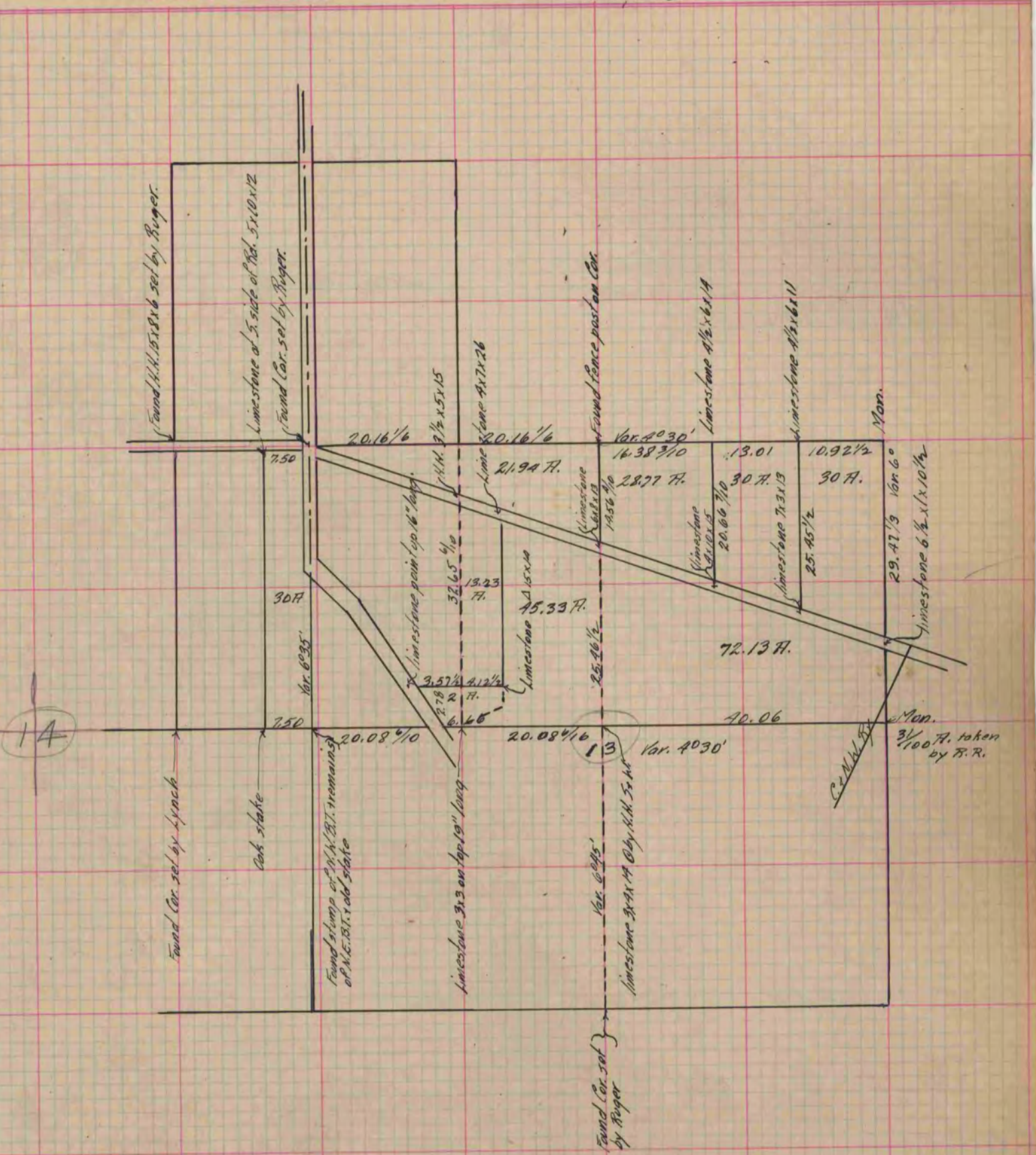
Of a Survey on Sections 13 & 14 T 3 R 12 E. of the 4 P. M. in Janesville Township  
 Rock County, Wisconsin, made June the 3, 1880

I hereby certify that the following is a correct record of said survey as made by me.

**COUNTY BUILDING  
 IN CITY OF БЕЛОIT**

(Signed) R. H. Lee  
R.H.L.

Dep.  
 County Surveyor.



Copied from P. 254 Vol. 2 County Surveyor's Record.