

# PLAT AND RECORD

Of a Survey on Section 15 T 1 R 13 E. of the 4 P. M. in Turtle Township

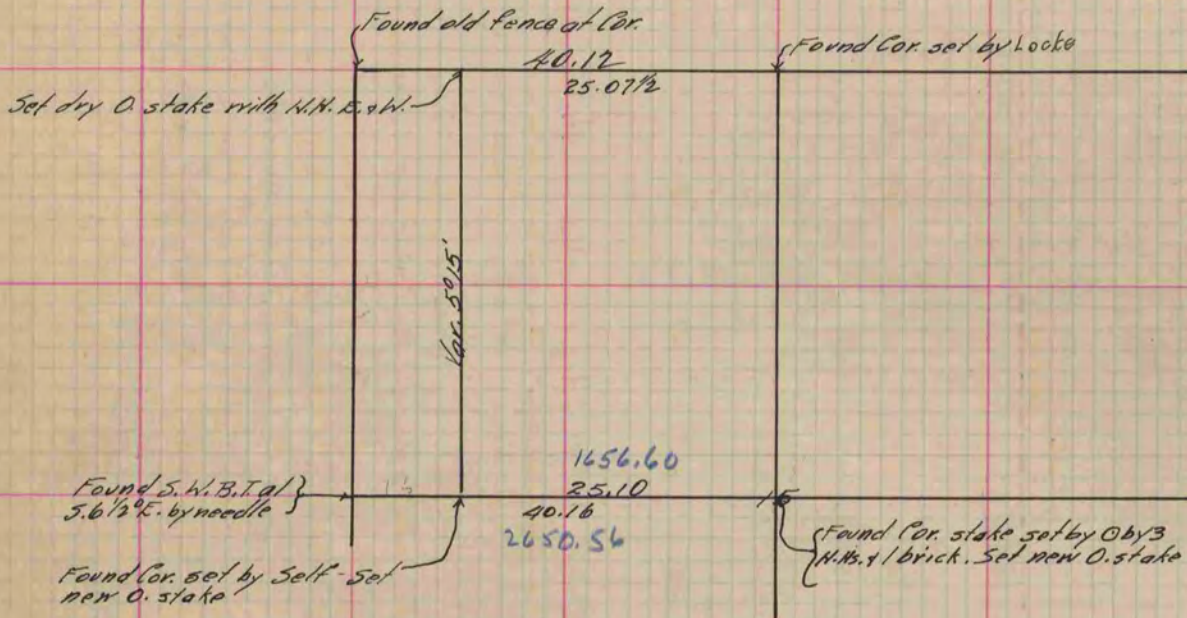
Rock County, Wisconsin, made June the 7<sup>th</sup> 1880

I hereby certify that the following is a correct record of said survey as made by me.

COUNTY BUILDING  
IN CITY OF BELOIT

(Signed) R.H. Lee  
R.H.B.

Dept.  
County Surveyor.



Copied from P. 254 Vol. 2 County Surveyor's Record.