

PLAT AND RECORD

Of a Survey on Section 2 T 1 R 13 E. of the 4 P. M. in Turtle Township

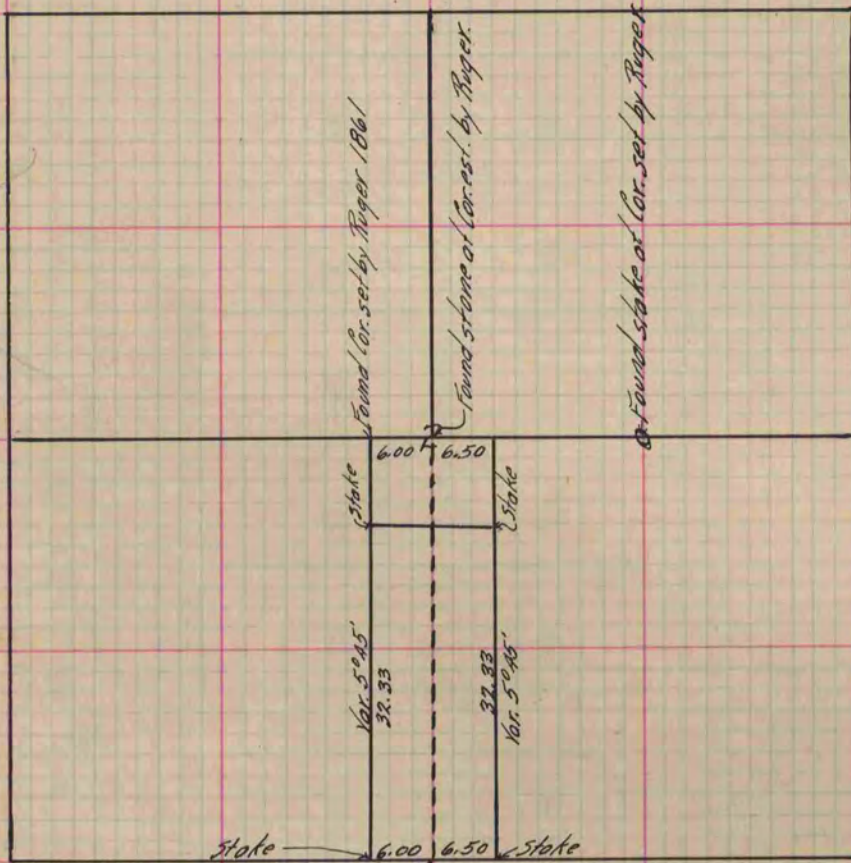
Rock County, Wisconsin, made June the 8th 1880

I hereby certify that the following is a correct record of said survey as made by me.

(Signed) R. K. Lee
R. K. L.

Dept.
County Surveyor.

COUNTY BUILDING
IN CITY OF BELOIT



Found stump of S.W. Q. set dry 0 stake @
by 3 limestones

Copied from P. 256 Vol. 2 County Surveyor's Record.