

PLAT AND RECORD

307

Of a Survey on Section 25 T 3 R 14 E. of the 4 P. M. in Johnstown Township

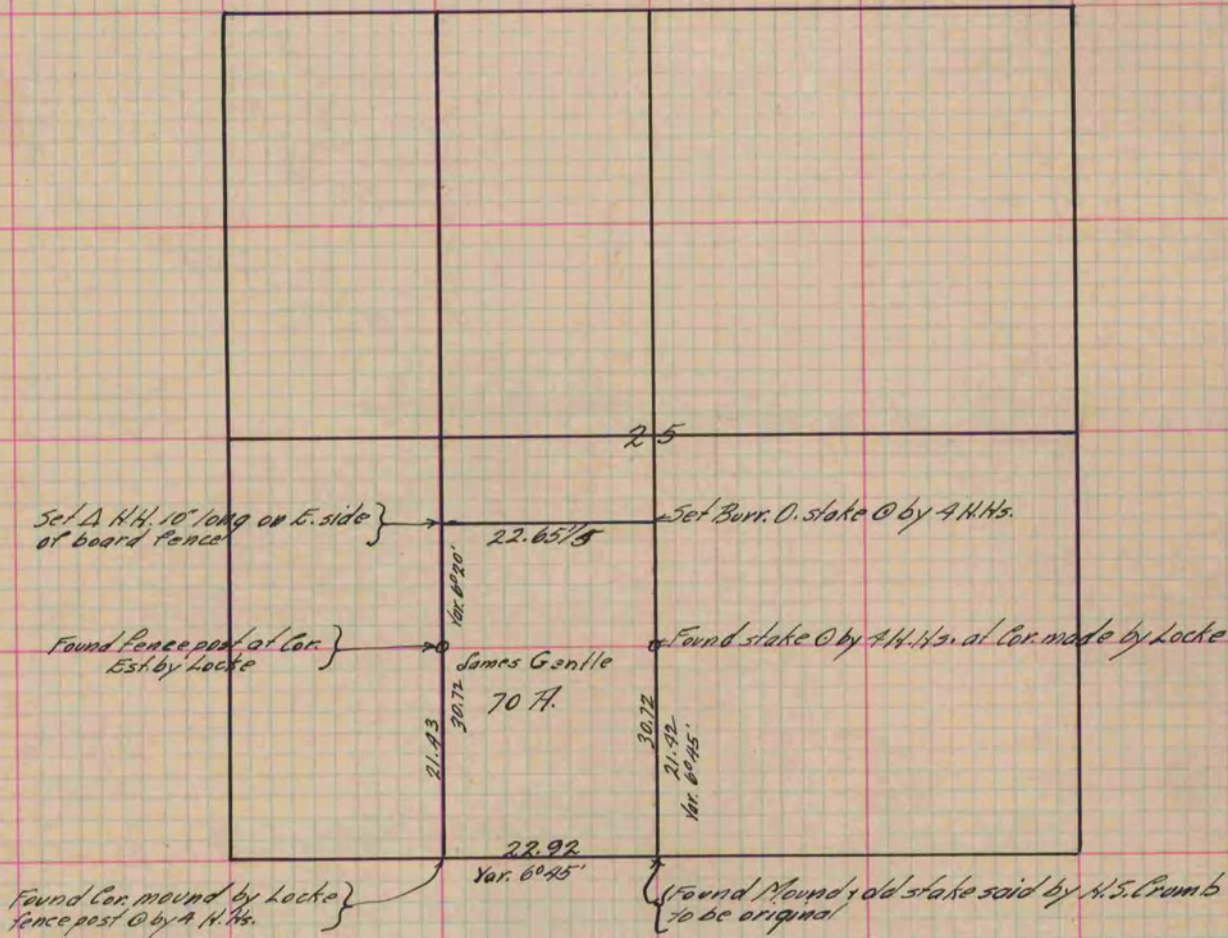
Rock County, Wisconsin, made June the 10th 1880

I hereby certify that the following is a correct record of said survey as made by me.

(Signed) R. K. Lee
R. K. L.

Dept.
County Surveyor.

COUNTY BUILDING
IN CITY OF БЕЛОIT



Copied from P. 256 Vol. 2 County Surveyor's Record.