

PLAT AND RECORD

Of a Survey on Section 29 & 20 T 4 R 13 E. of the 4 P. M. in Milton Township
Rock County, Wisconsin, made August the 20 & 21st 1880

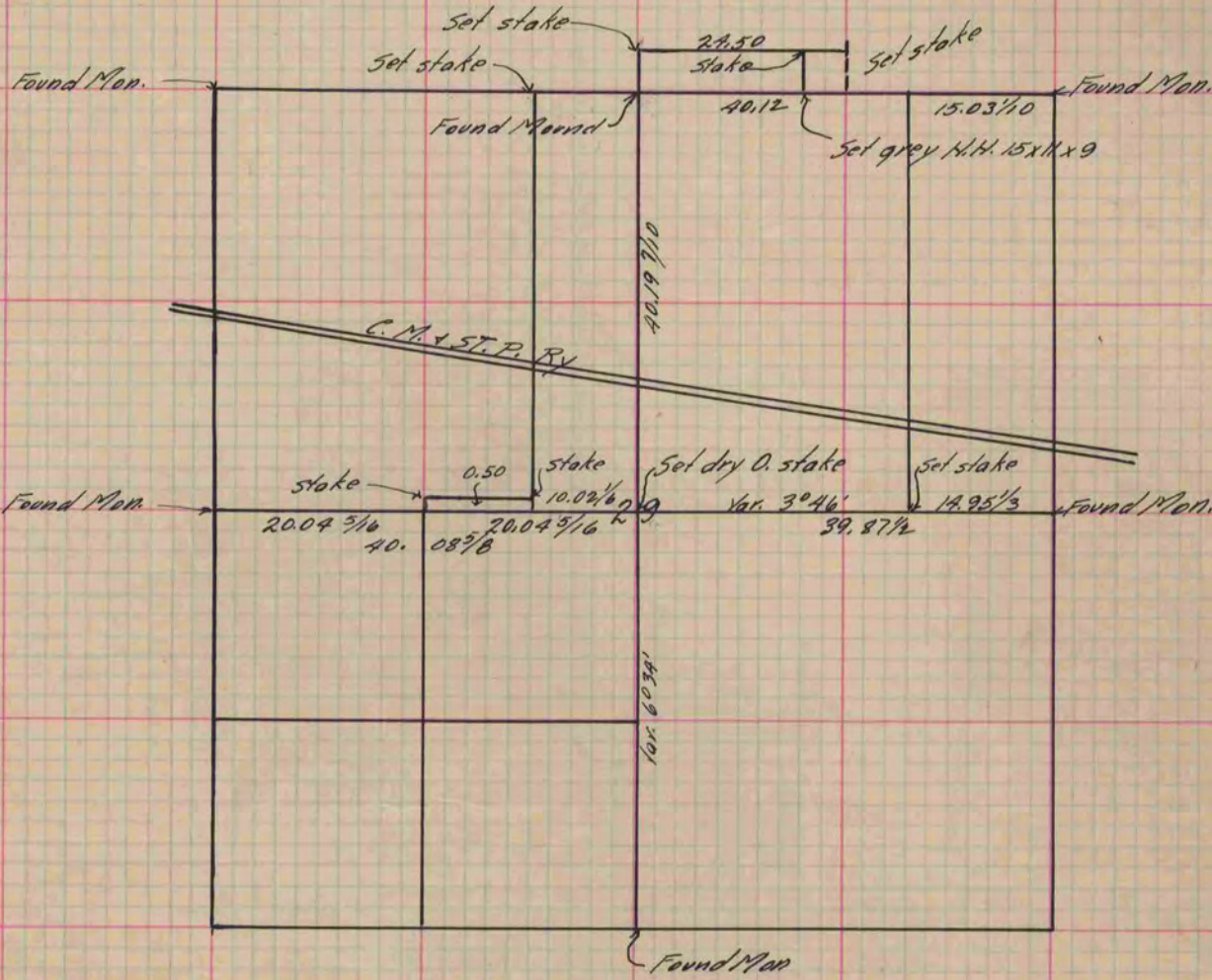
I hereby certify that the following is a correct record of said survey as made by me.

COUNTY BUILDING
IN CITY OF БЕЛОIT

(Signed) R. H. Lee
R.H.L.

Depl.
County Surveyor.

COUNTY BUILDING
IN CITY OF БЕЛОIT



Copied from P. 258 Vol. 2 County Surveyors Record.