

PLAT AND RECORD

Of a Survey on Section 19 T 4 R 12 E. of the 4 P. M. in Fulton Township
Rock County, Wisconsin, made October the 20+21st 1880

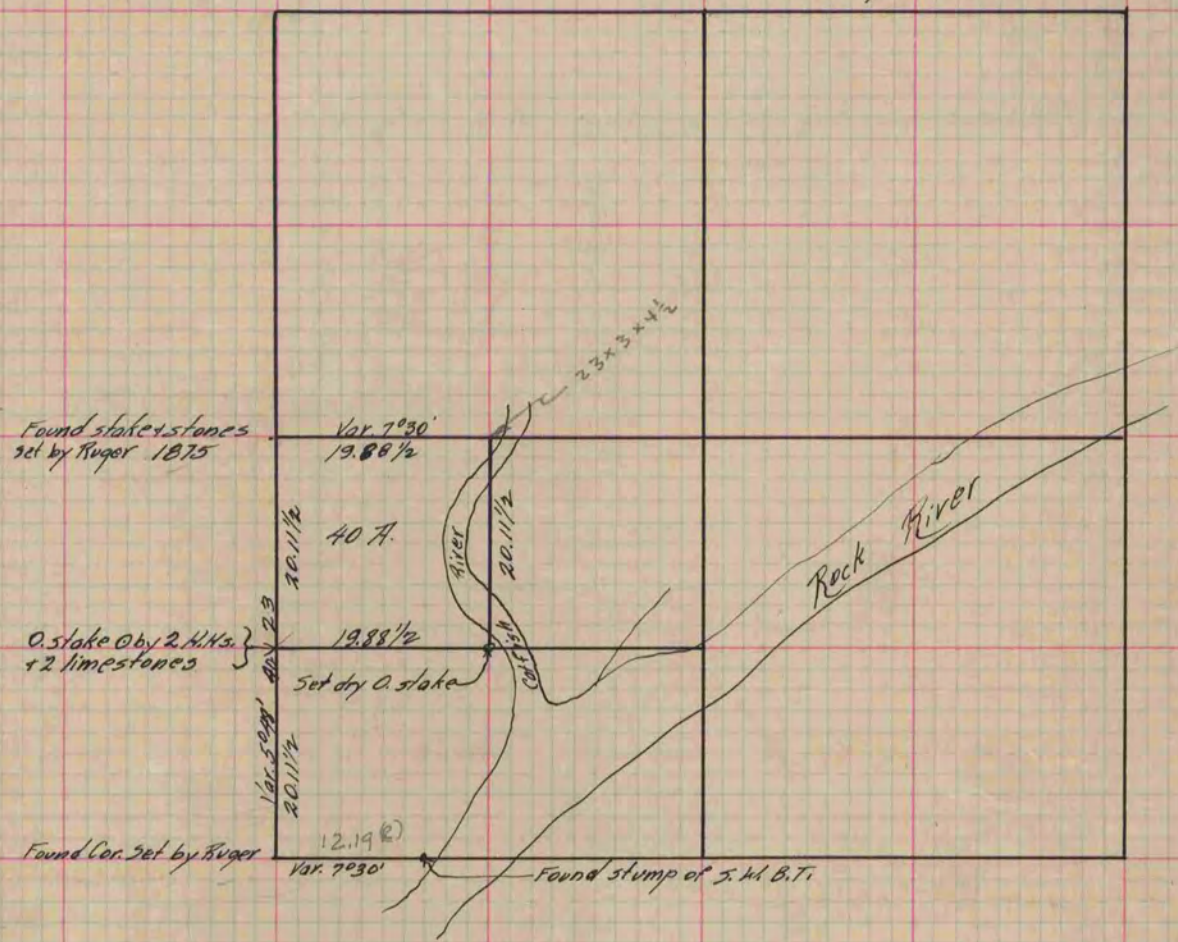
I hereby certify that the following is a correct record of said survey as made by me.

(Signed) R. K. Lee
RMLB

Depl.
County Surveyor.

COUNTY BUILDING
IN CITY OF БЕЛОIT

Cor. lost B.T. gone did not Est. it



Copied from P. 261 Vol. 2 County Surveyor's Record.