

PLAT AND RECORD

Of a Survey on Section 27 T 2 R 14 E. of the 4 P. M. in Bradford Township

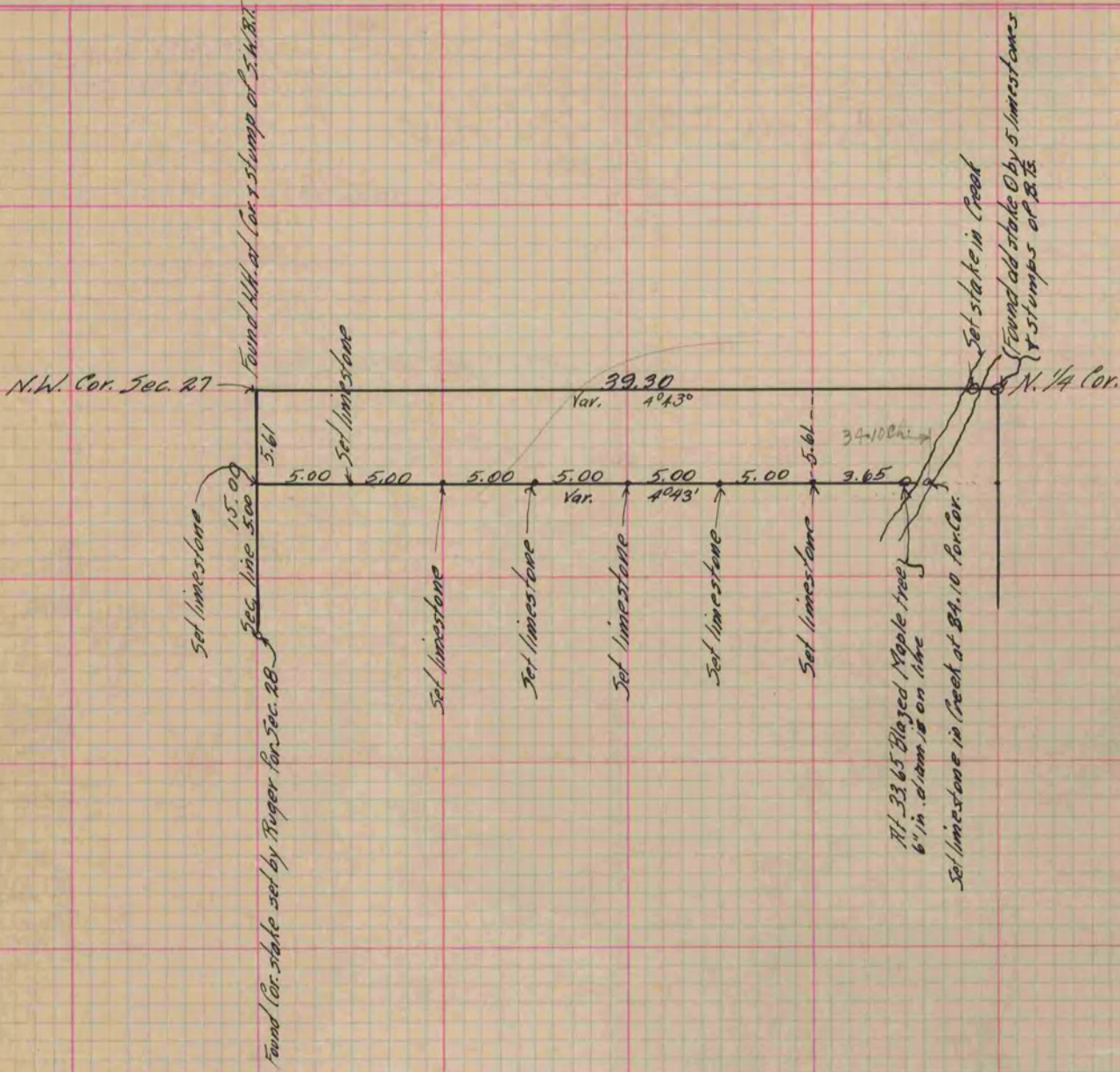
Rock County, Wisconsin, made December the 27th 22nd 1880

COUNTY BUILDING
IN CITY OF BELOIT

I hereby certify that the following is a correct record of said survey as made by me.

(Signed) R. K. Lee
RMB

Dept.
County Surveyor.



Copied from P. 262 Vol. 2 County Surveyor's Record.