

# PLAT AND RECORD

Of a Survey on Section 36 T / R // E. of the 4 P. M. in Newark Township

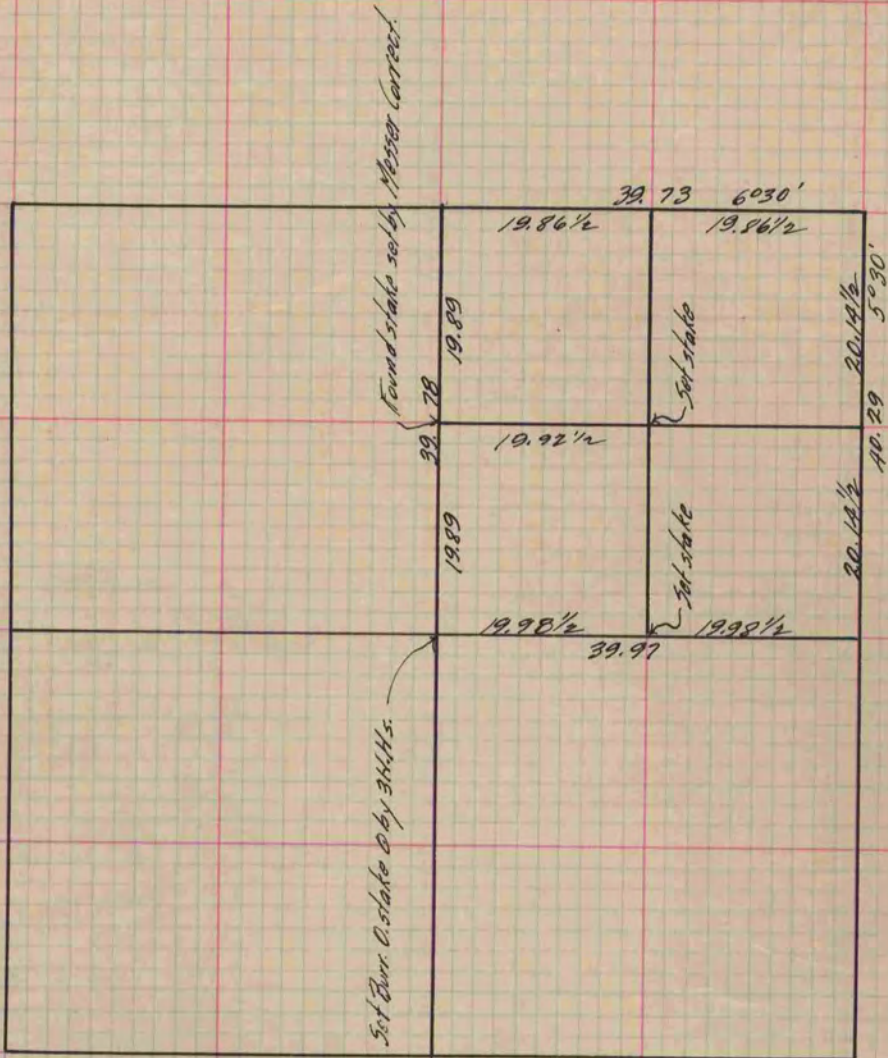
Rock County, Wisconsin, made April the 22<sup>nd</sup> 1881

I hereby certify that the following is a correct record of said survey as made by me.

COUNTY BUILDING  
IN CITY OF BELOIT

(Signed) R. K. Lee  
R. K. Lee

Dept.  
County Surveyor.



*Copied from P. 267 Vol. 2 County Surveyor's Record.*