

# PLAT AND RECORD

Of a Survey on Section 33 T 3 R 12 E. of the 4 P. M. in Janesville Township

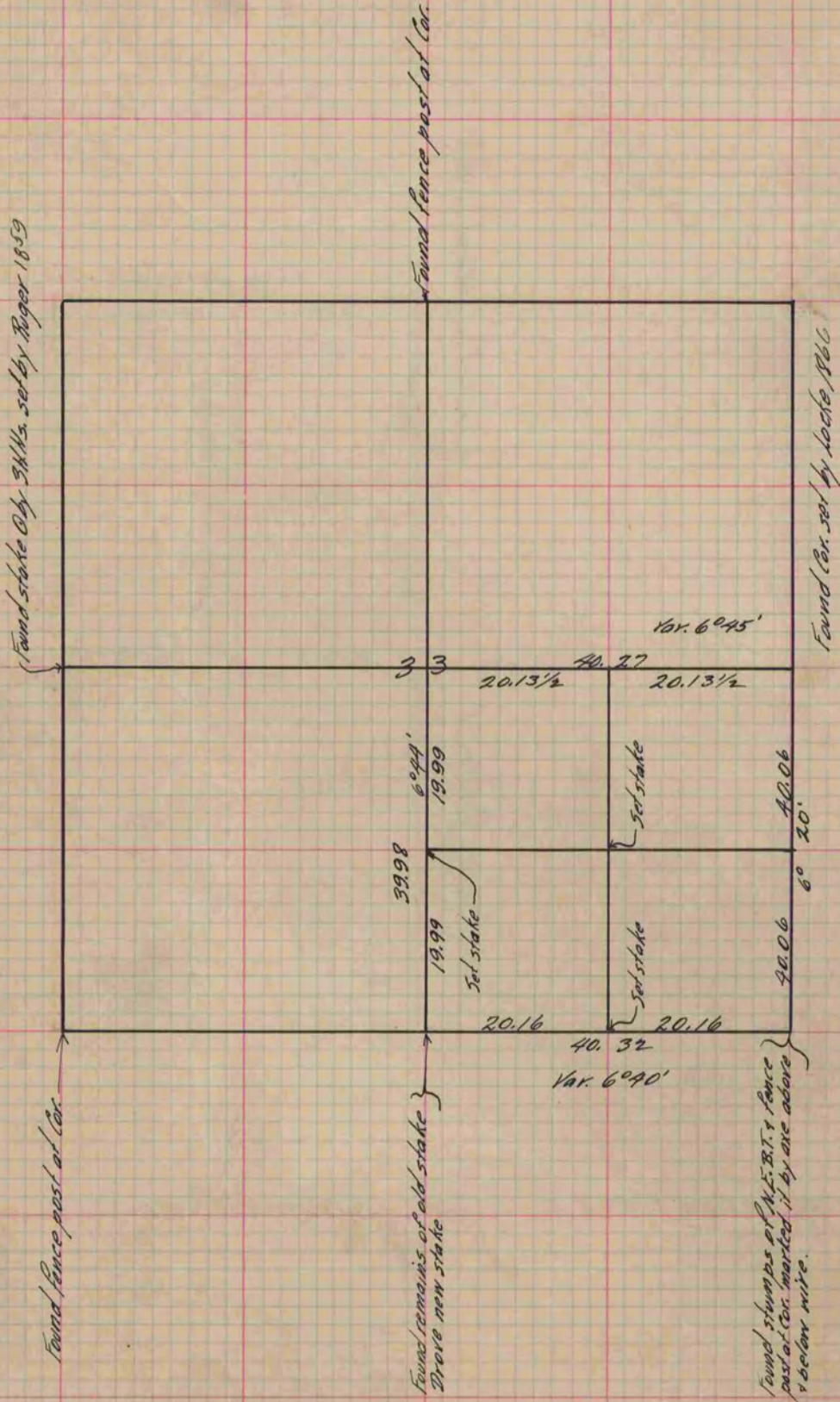
Rock County, Wisconsin, made May the 3rd 1881

I hereby certify that the following is a correct record of said survey as made by me.

COUNTY BUILDING  
IN CITY OF БЕЛОIT

(Signed) R.K. Lee  
1881

County Surveyor.



Copied from P. 263 Vol. 2 County Surveyor's Record.