

# PLAT AND RECORD

Of a Survey on Section 30 T 3 R 13 E. of the 4 P. M. in Harmony Township

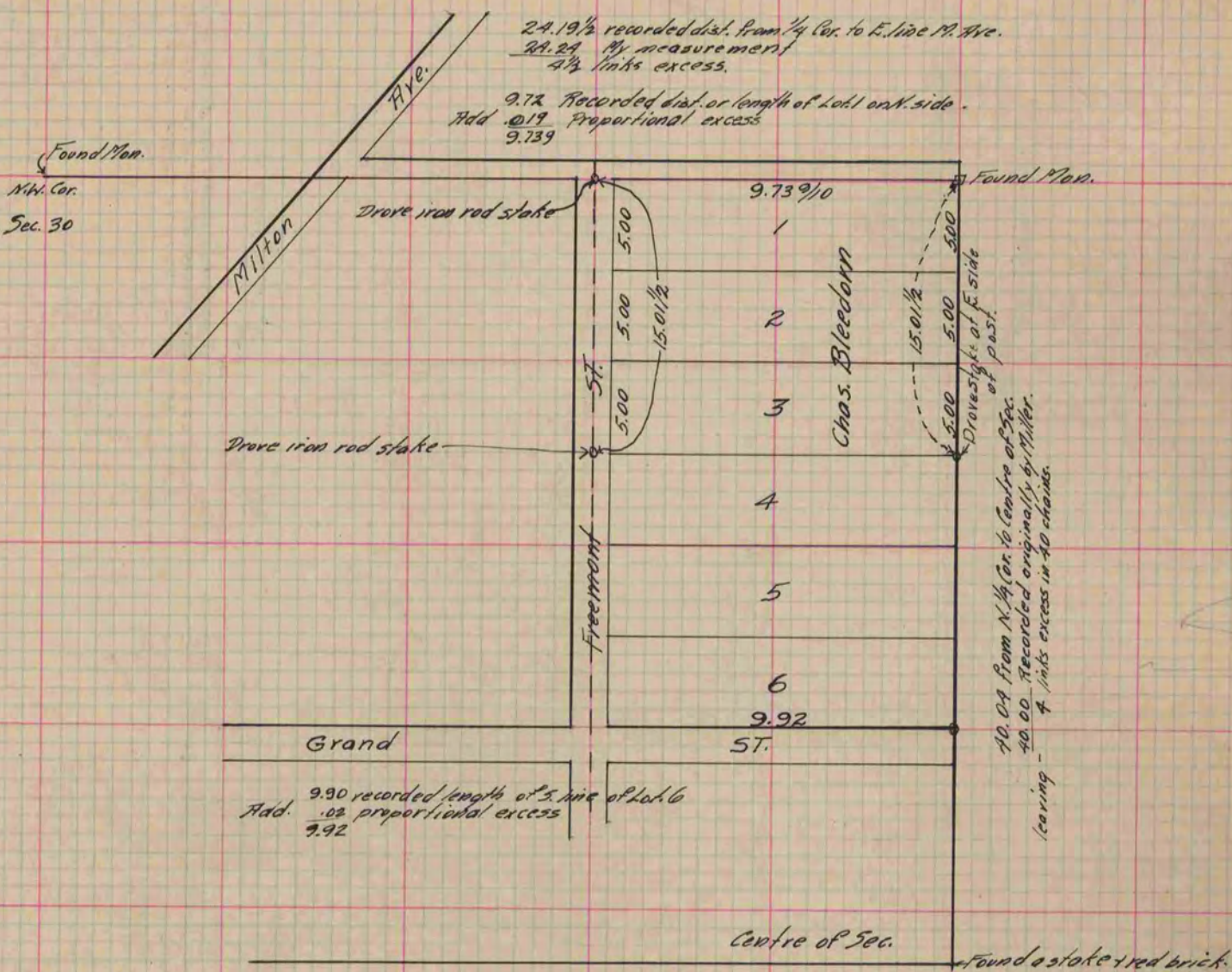
Rock County, Wisconsin, made May the 26<sup>th</sup> & 27<sup>th</sup> 1881

I hereby certify that the following is a correct record of said survey as made by me.

COUNTY BUILDING  
IN CITY OF БЕЛОIT

(Signed) R. K. Lee  
P. S.

County Surveyor.



To S. D. Smiths Add. to Janesville for the purpose of determining the boundaries of lots 2 & 3 in said Addn.

Copied from T. 266 Vol. 2 County Surveyor's Record.