

# PLAT AND RECORD

Of a Survey on Section 6 T 1 R 12 E. of the 4 P. M. in Beloit Township

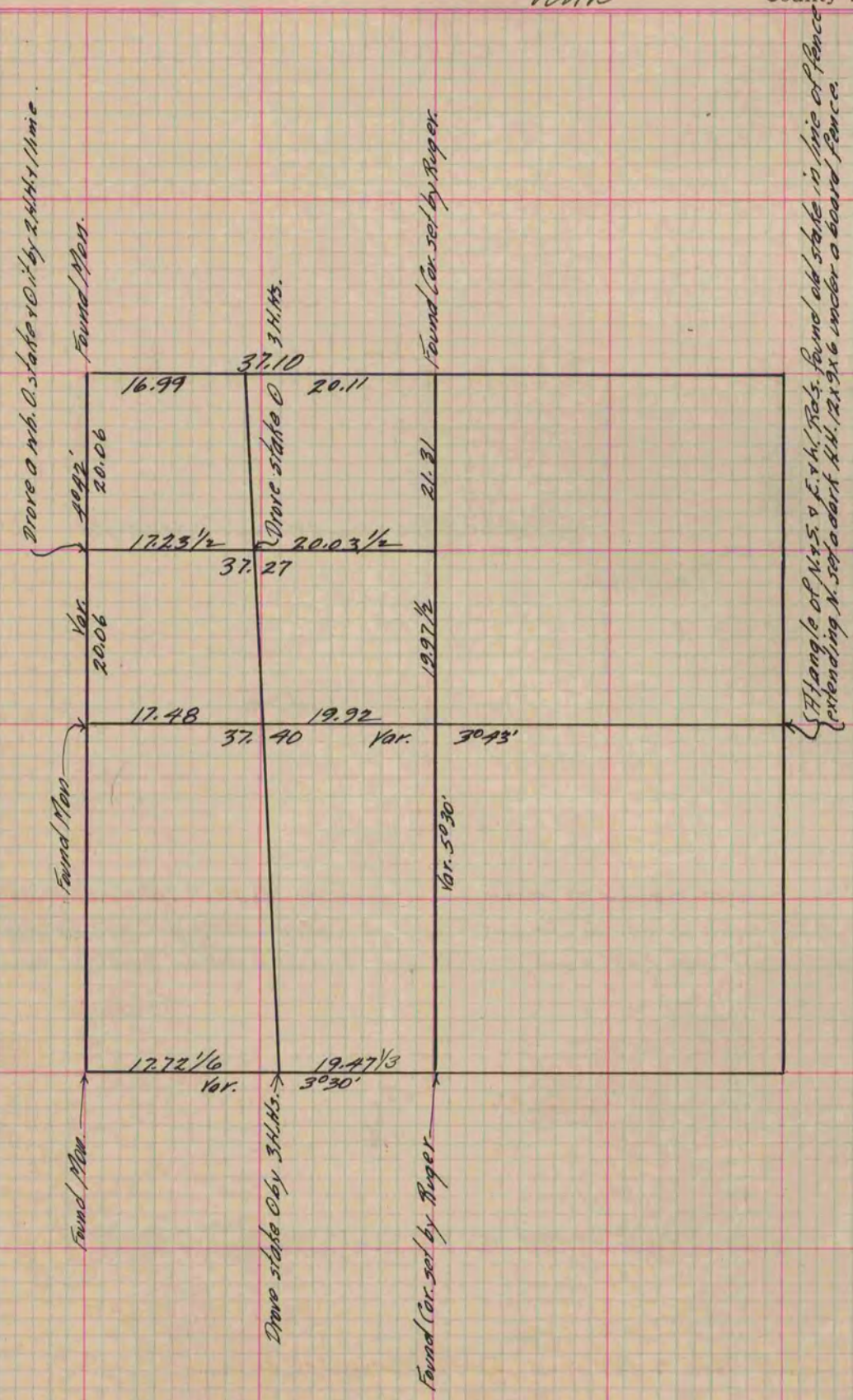
Rock County, Wisconsin, made September the 5<sup>th</sup> & 6<sup>th</sup> 1881

I hereby certify that the following is a correct record of said survey as made by me.

COUNTY BUILDING  
IN CITY OF BELOIT

(Signed) R. K. Lee  
RKL

County Surveyor.



Copied from P. 269 Vol. 2 County Surveyor's Record.