

# PLAT AND RECORD

Of a Survey on Section 14 T 2 R 10 E. of the 4 P. M. in Spring Valley Township  
Rock County, Wisconsin, made January the 31<sup>st</sup> 1882

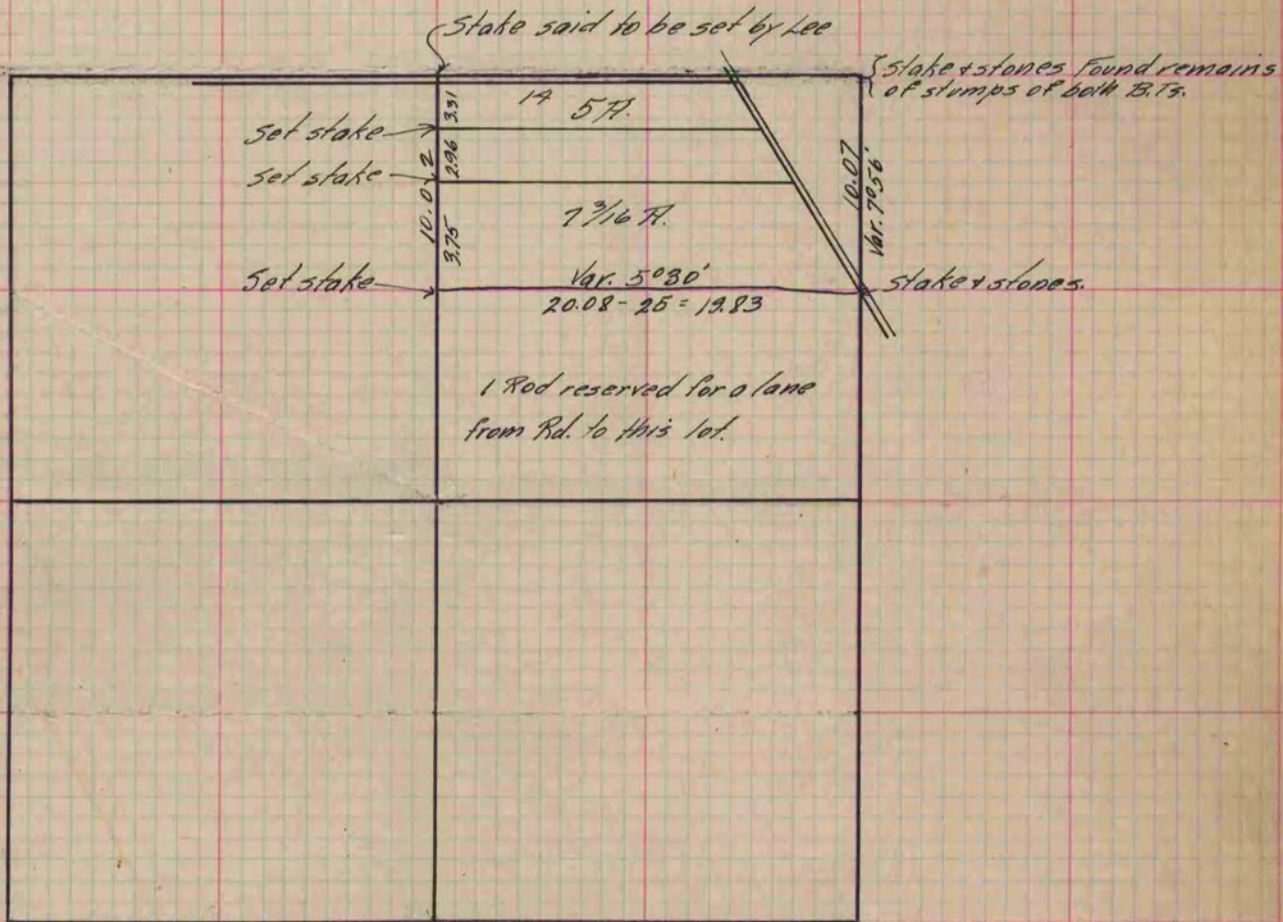
I hereby certify that the following is a correct record of said survey as made by me.

COUNTY BUILDING  
IN CITY OF БЕЛОIT

(Signed) S. F. Holmes.  
R.A.B.

County Surveyor.

*N.W. 1/4 of Sec. 14 Spring Valley*



*The parties objecting to a further search for Sec. Cors.*

*Copied from P. 281 Vol. 2 County Surveyor's Record.*