

# PLAT AND RECORD

Of a Survey on Section 2 T 1 R 10 E. of the 4 P. M. in Avon Township

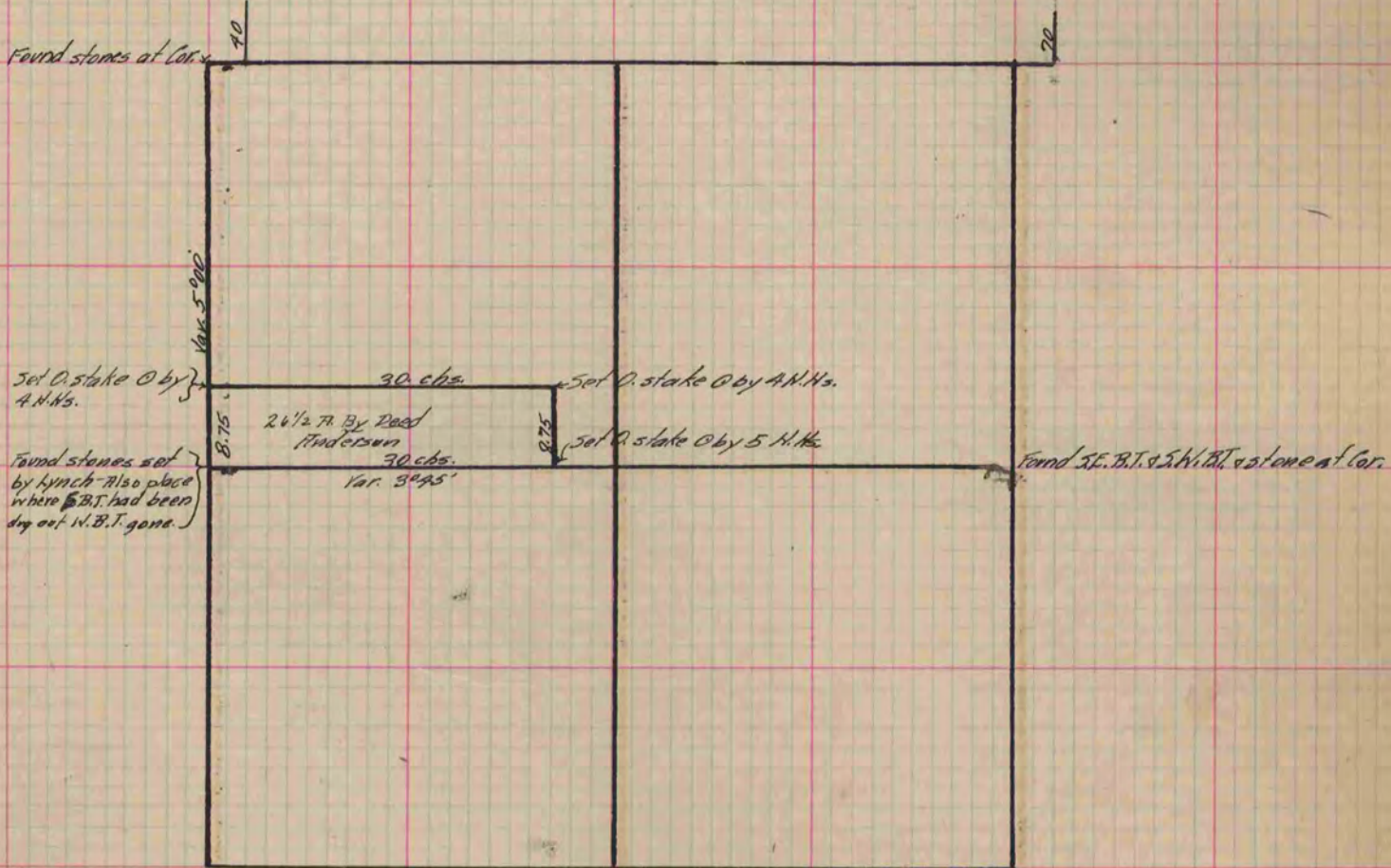
Rock County, Wisconsin, made November the 13<sup>th</sup> 1883

I hereby certify that the following is a correct record of said survey as made by me.

COUNTY BUILDING  
IN CITY OF BELOIT

(Signed) R. K. Lee  
RKL

Dep. County Surveyor.



Copied from P. 291 Vol. 2 County Surveyor's Record.