

PLAT AND RECORD

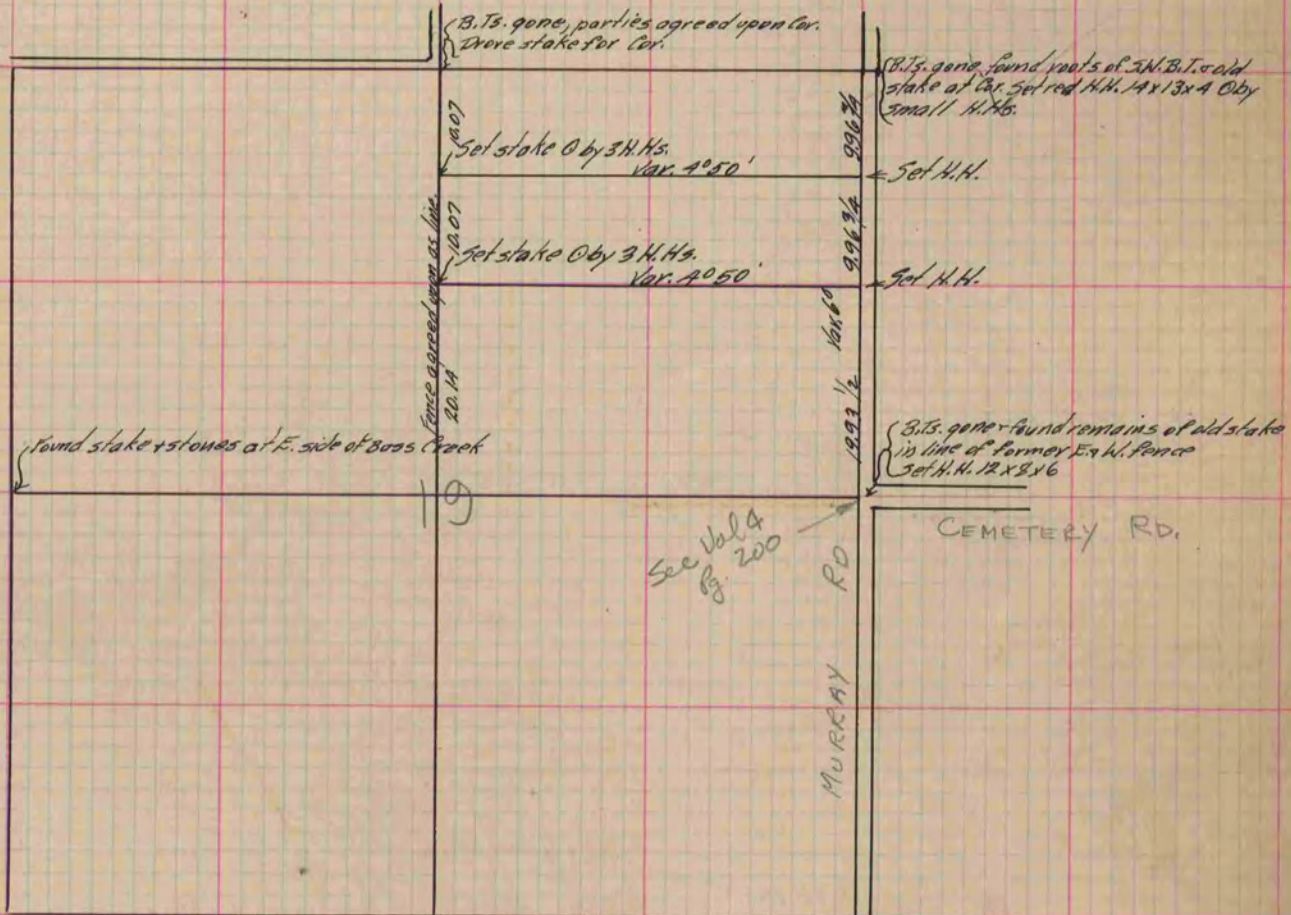
Of a Survey on Section 19 T 2 R 12 E. of the 4 P. M. in Rock Township
Rock County, Wisconsin, made Dec. the 8th 19th 1883

I hereby certify that the following is a correct record of said survey as made by me.

COUNTY BUILDING
IN CITY OF BELOIT

(Signed) R.K. Lee
RKL

Dep. County Surveyor.



Copied from P. 293 Vol. 2 County Surveyor's Record.