

PLAT AND RECORD

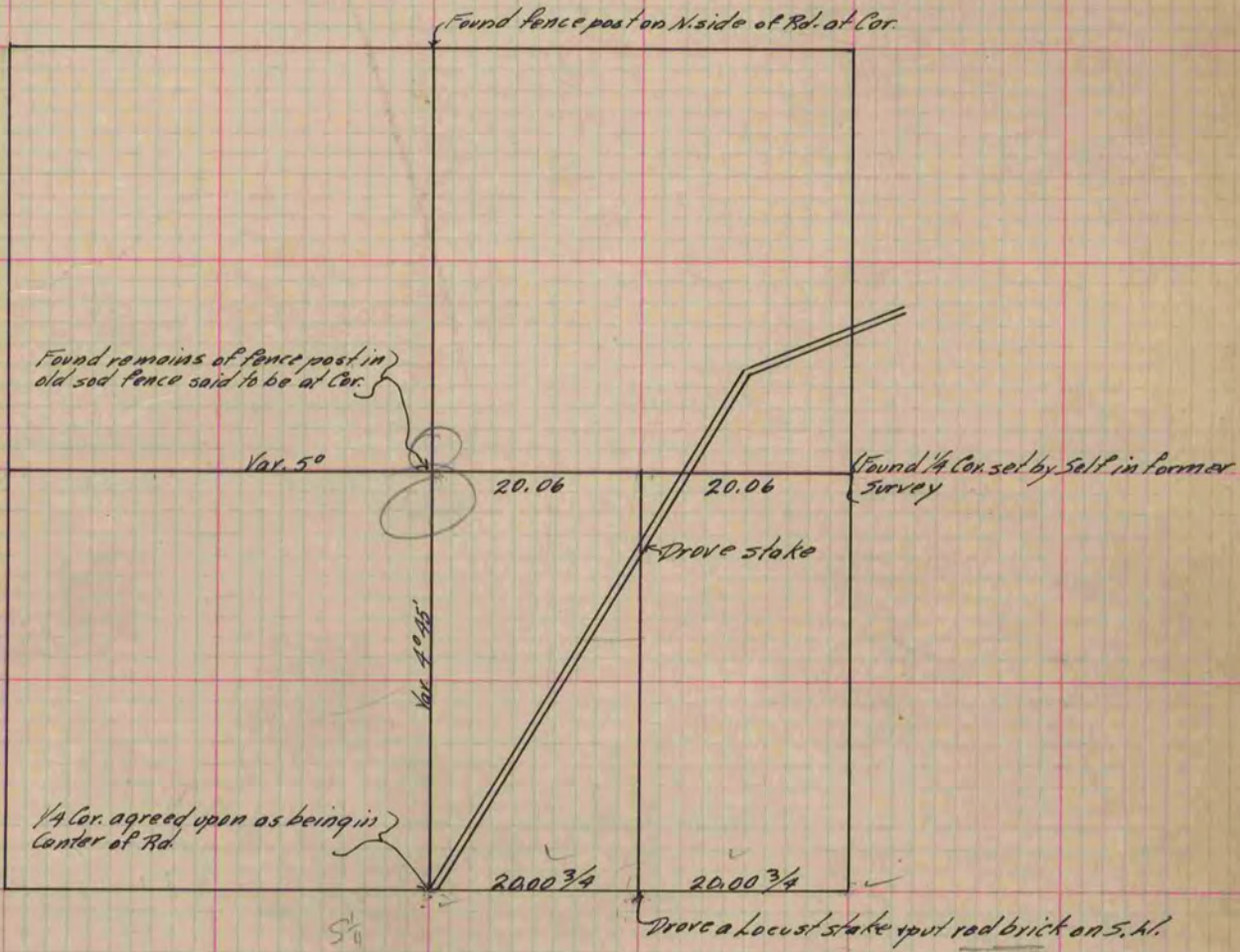
Of a Survey on Section 8 T 1 R 13 E. of the 4 P. M. in Turtle Township
Rock County, Wisconsin, made March the 23rd 1882

I hereby certify that the following is a correct record of said survey as made by me.

COUNTY BUILDING
IN CITY OF BELOIT

(Signed) R. K. Lee
1882

Dep. County Surveyor.



Copied from P. 297 Vol. 2 County Surveyor's Record.