

# PLAT AND RECORD

Of a Survey on Section 3 T A R 11 E. of the 4 P. M. in Porter Township

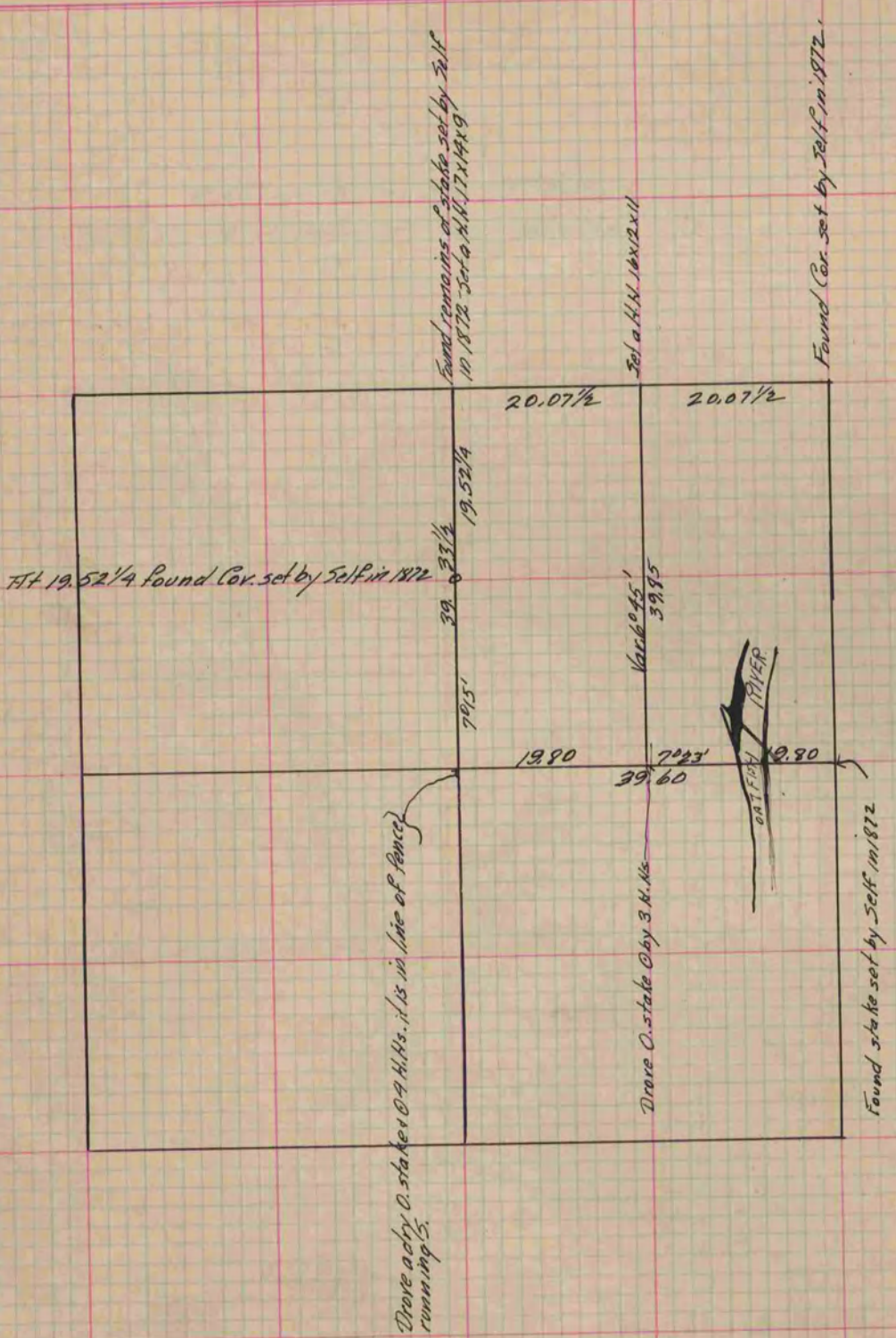
Rock County, Wisconsin, made June the 9th 1882

I hereby certify that the following is a correct record of said survey as made by me.

COUNTY BUILDING  
IN CITY OF BELOIT

(Signed) R. K. Lee  
RKL

Dep. County Surveyor.



Copied from P. 300 Vol. 2 County Surveyor's Record.