

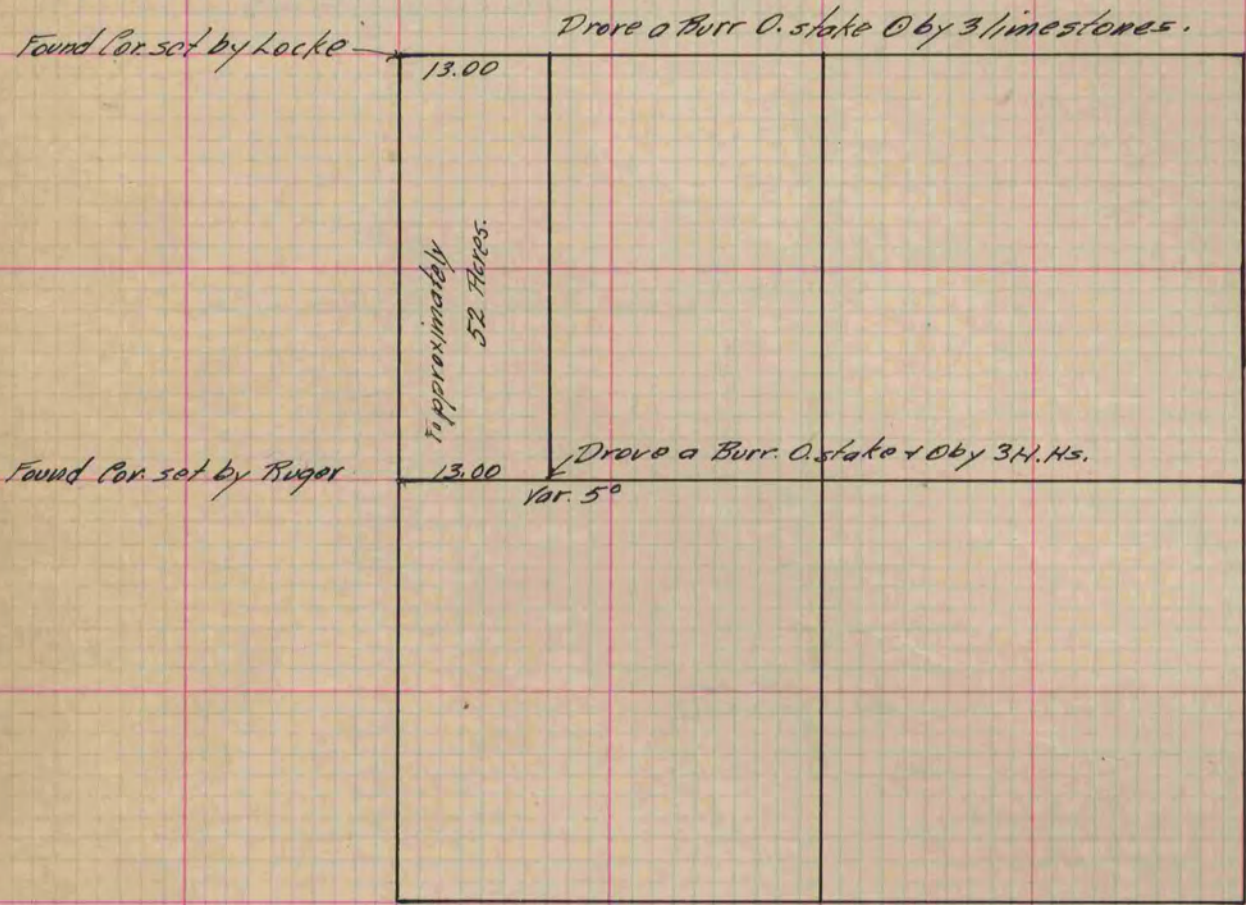
PLAT AND RECORD

Of a Survey on Section 33 T 2 R 1A E. of the 4 P. M. in Bradford Township
Rock County, Wisconsin, made June the 20 & 21 1892

I hereby certify that the following is a correct record of said survey as made by me.

COUNTY BUILDING
IN CITY OF BELOIT

(Signed) R. K. Lee
RML Dep. County Surveyor.



Copied from P. 301 Vol. 2 County Surveyor's Record.