

PLAT AND RECORD

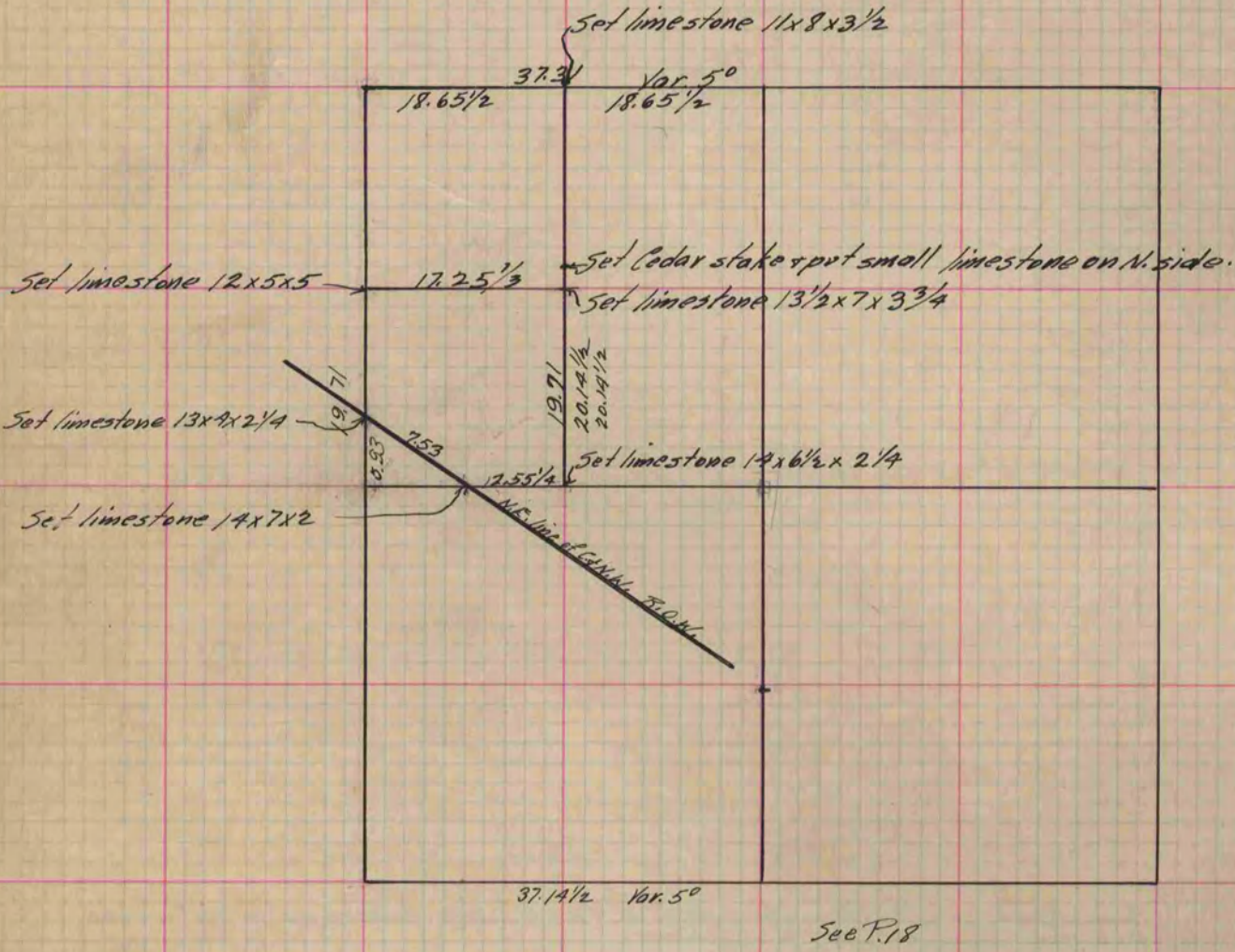
Of a Survey on Section 7 T. 2 R. 13 E. of the 4 P. M. in La Prairie Township

Rock County, Wisconsin, made September the 2 1884

I hereby certify that the following is a correct record of said survey as made by me.

COUNTY BUILDING
IN CITY OF БЕЛОIT

(Signed) Edward Ruger
RMB County Surveyor.



Copied from P. 303 Vol. 2 County Surveyor's Records.