

PLAT AND RECORD

Of a Survey on Section 8 T 3 R 12 E. of the 4 P. M. in Janesville Township

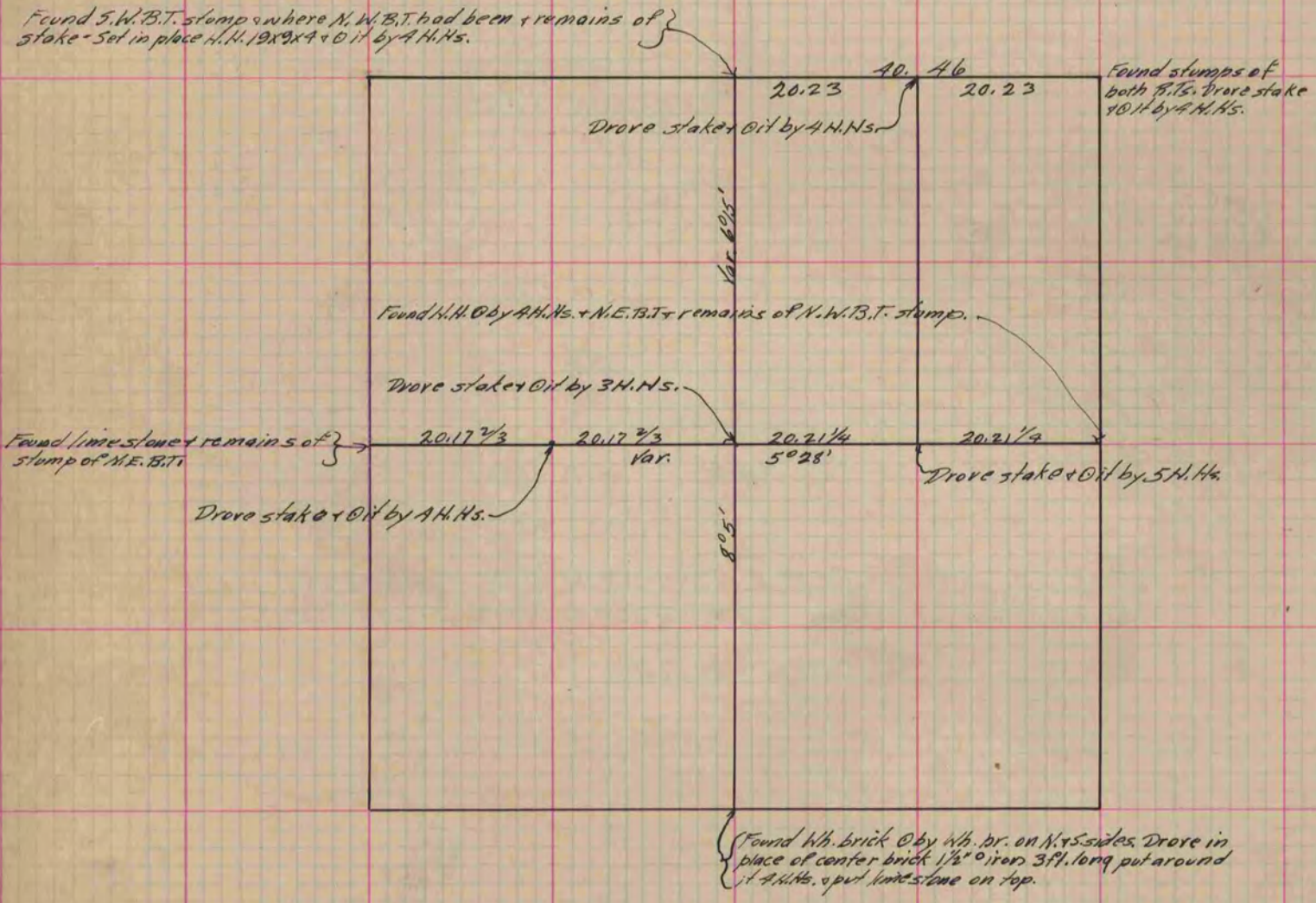
Rock County, Wisconsin, made April the 21 1884

I hereby certify that the following is a correct record of said survey as made by me.

COUNTY BUILDING
IN CITY OF БЕЛОIT

(Signed) Edward Ruger
ERB

County Surveyor.



Copied from P. 310 Vol. 2 County Surveyor's Record.