

PLAT AND RECORD

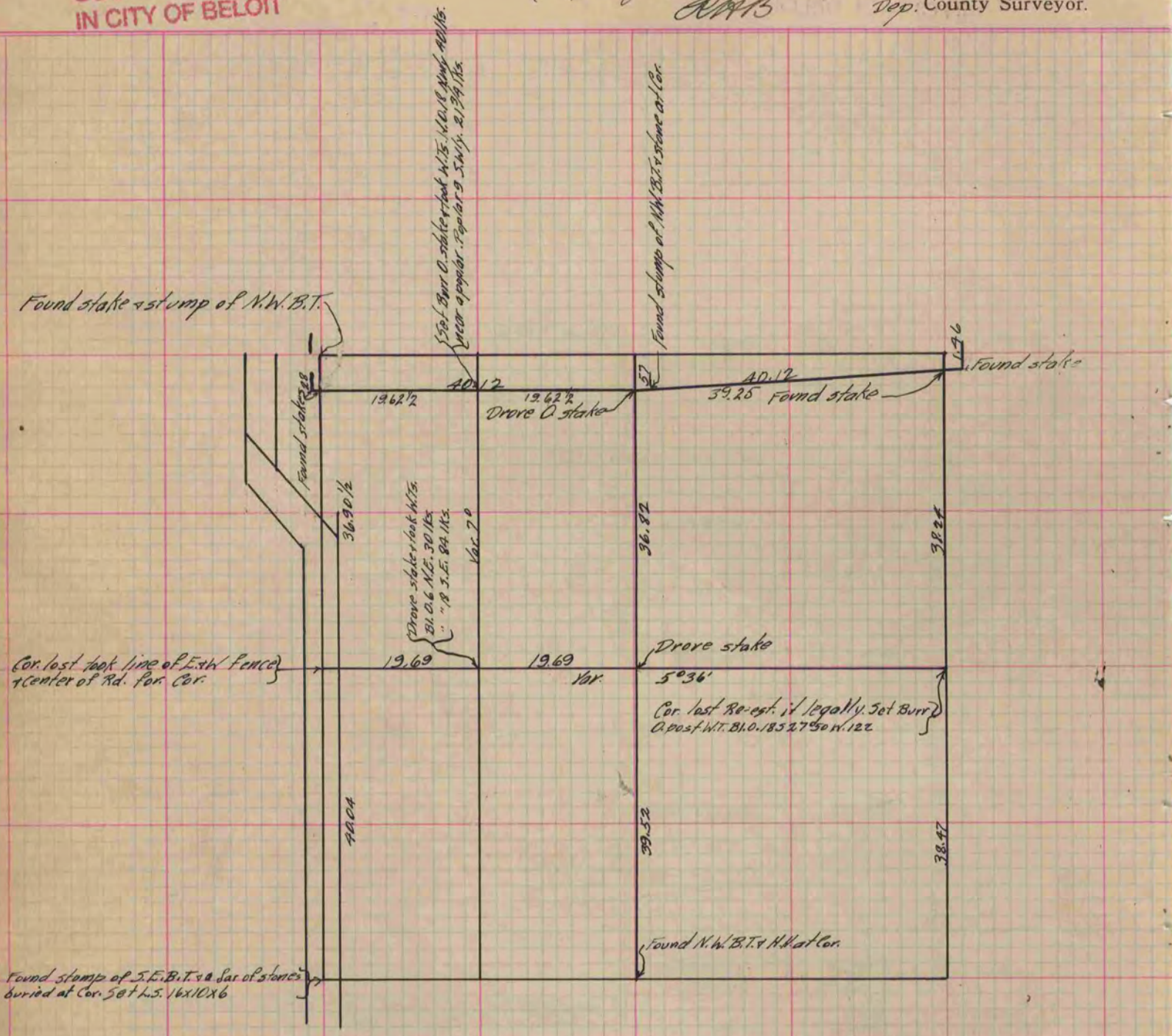
Of a Survey on Section 4 T 2 R 9 E. of the 4 P. M. in _____ Township

Rock County, Wisconsin, made June the 10th 1887

I hereby certify that the following is a correct record of said survey as made by me.

COUNTY BUILDING
IN CITY OF БЕЛОIT

(Signed) R. K. Lee
RMB Dep. County Surveyor.



Copied from T. 318 Vol. 2 County Surveyor's Record.