

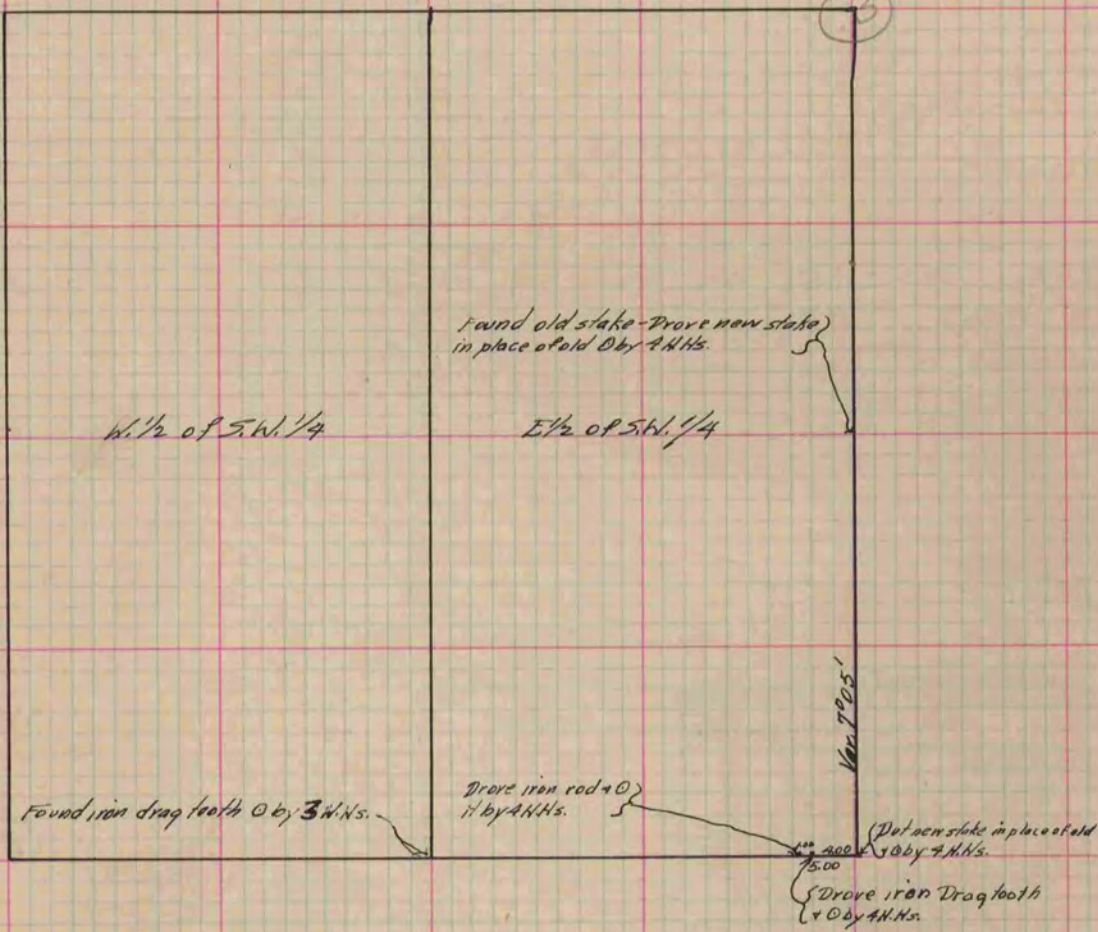
PLAT AND RECORD

Of a Survey on ^{SW 1/4} Section 3 T 4 R 12 E. of the 4 P. M. in Fulton Township
 Rock County, Wisconsin, made _____ the _____ 19____

I hereby certify that the following is a correct record of said survey as made by me.

COUNTY BUILDING
 IN CITY OF BELOIT

(Signed) Edward Peger
EPH County Surveyor.



Copied from P. 324 Vol. 2 County Surveyor's Record.