

PLAT AND RECORD

Of a Survey on Section 3 T 1 R 11 E. of the 4 P. M. in Newark Township

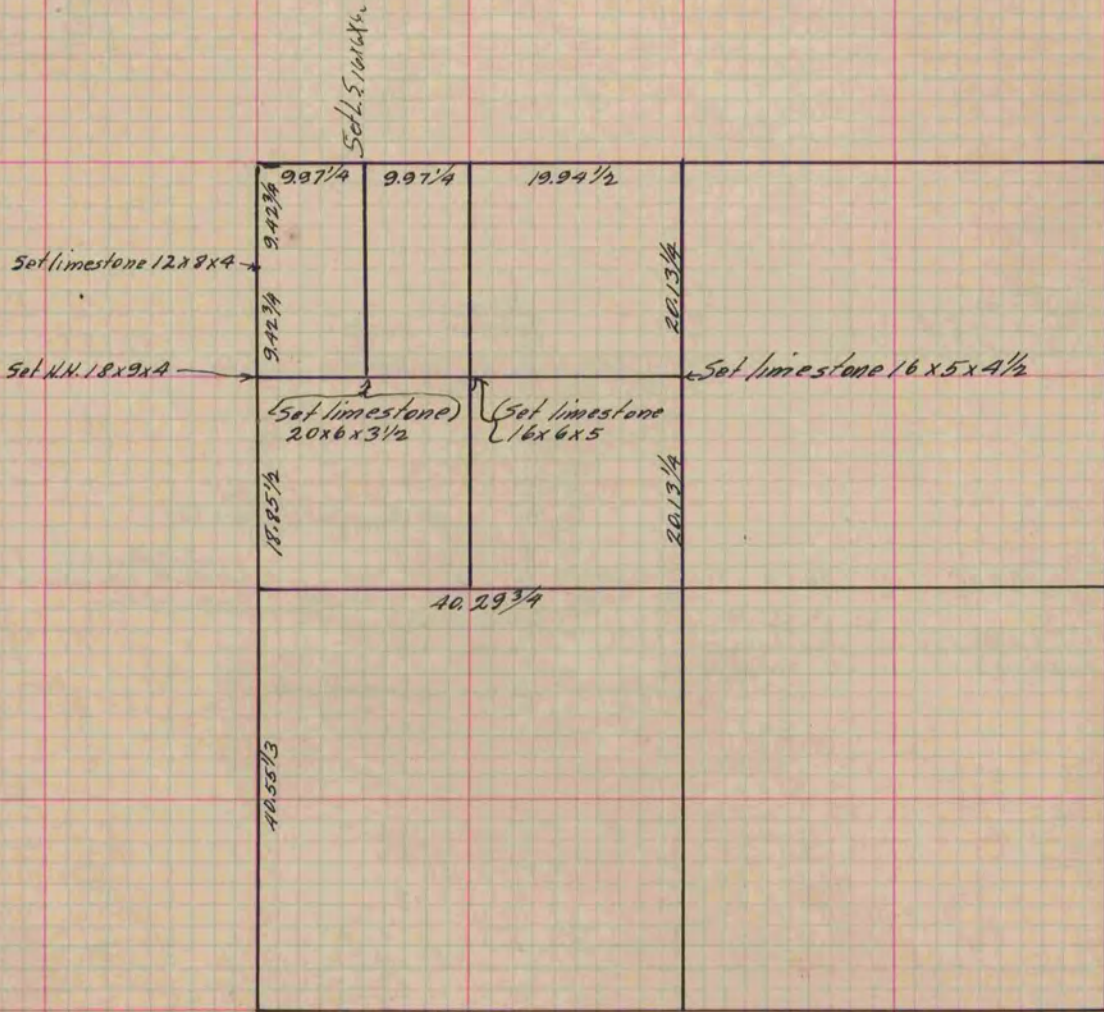
Rock County, Wisconsin, made May the 8 1882

I hereby certify that the following is a correct record of said survey as made by me.

COUNTY BUILDING
IN CITY OF БЕЛОIT

(Signed) *Edward Ruger*

County Surveyor.



Copied from P. 325 Vol. 2 County Surveyor's Record.