

PLAT AND RECORD

Of a Survey on Sections 10 & 11 T 2 R 12 E. of the 4 P. M. in Rock Township

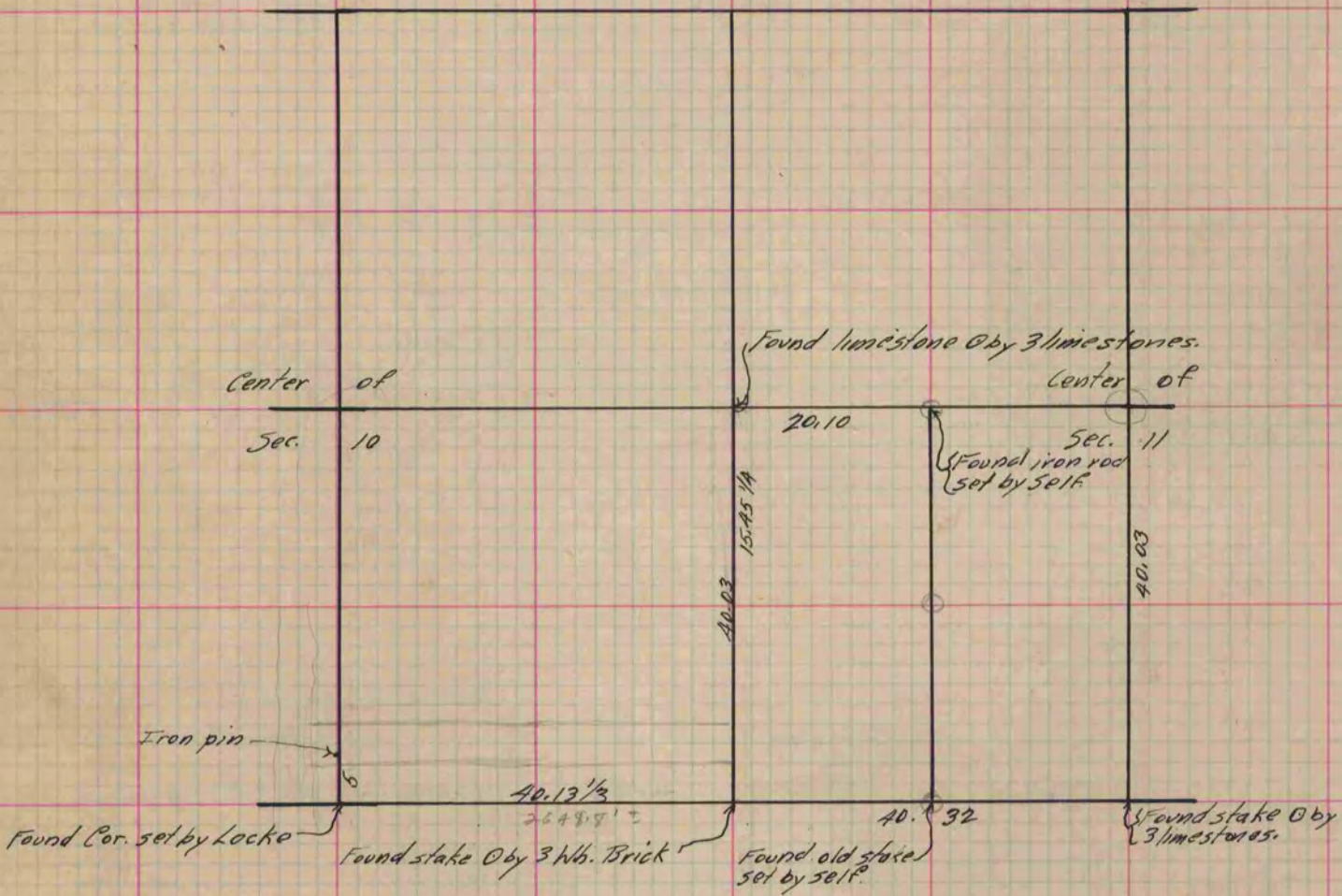
Rock County, Wisconsin, made January the 12 1883

I hereby certify that the following is a correct record of said survey as made by me.

COUNTY BUILDING
IN CITY OF BELOIT

(Signed) Edward Rager
ER

County Surveyor.



133
79
79
87.7
2648.8

Copied from P. 330 Vol. 2 County Surveyor's Record.